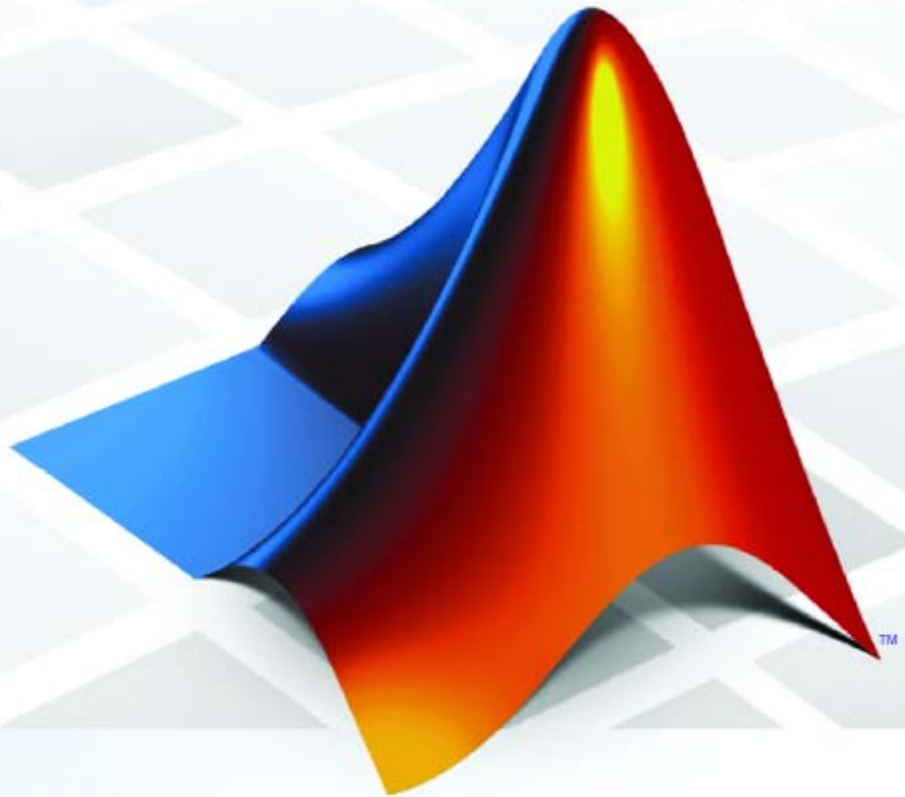


# PolySpace<sup>®</sup> 7

## Installation Guide



## How to Contact The MathWorks



[www.mathworks.com](http://www.mathworks.com) Web  
[comp.soft-sys.matlab](mailto:comp.soft-sys.matlab) Newsgroup  
[www.mathworks.com/contact\\_TS.html](http://www.mathworks.com/contact_TS.html) Technical Support



[suggest@mathworks.com](mailto:suggest@mathworks.com) Product enhancement suggestions  
[bugs@mathworks.com](mailto:bugs@mathworks.com) Bug reports  
[doc@mathworks.com](mailto:doc@mathworks.com) Documentation error reports  
[service@mathworks.com](mailto:service@mathworks.com) Order status, license renewals, passcodes  
[info@mathworks.com](mailto:info@mathworks.com) Sales, pricing, and general information



508-647-7000 (Phone)



508-647-7001 (Fax)



The MathWorks, Inc.  
3 Apple Hill Drive  
Natick, MA 01760-2098

For contact information about worldwide offices, see the MathWorks Web site.

*PolySpace® Installation Guide*

© COPYRIGHT 2007–2010 by The MathWorks, Inc.

The software described in this document is furnished under a license agreement. The software may be used or copied only under the terms of the license agreement. No part of this manual may be photocopied or reproduced in any form without prior written consent from The MathWorks, Inc.

FEDERAL ACQUISITION: This provision applies to all acquisitions of the Program and Documentation by, for, or through the federal government of the United States. By accepting delivery of the Program or Documentation, the government hereby agrees that this software or documentation qualifies as commercial computer software or commercial computer software documentation as such terms are used or defined in FAR 12.212, DFARS Part 227.72, and DFARS 252.227-7014. Accordingly, the terms and conditions of this Agreement and only those rights specified in this Agreement, shall pertain to and govern the use, modification, reproduction, release, performance, display, and disclosure of the Program and Documentation by the federal government (or other entity acquiring for or through the federal government) and shall supersede any conflicting contractual terms or conditions. If this License fails to meet the government's needs or is inconsistent in any respect with federal procurement law, the government agrees to return the Program and Documentation, unused, to The MathWorks, Inc.

### Trademarks

MATLAB and Simulink are registered trademarks of The MathWorks, Inc. See [www.mathworks.com/trademarks](http://www.mathworks.com/trademarks) for a list of additional trademarks. Other product or brand names may be trademarks or registered trademarks of their respective holders.

### Patents

The MathWorks products are protected by one or more U.S. patents. Please see [www.mathworks.com/patents](http://www.mathworks.com/patents) for more information.

### Revision History

March 2008	First printing	New for Version 5.1 (Release 2008a)
October 2008	Second printing	Revised for Version 6.0 (Release 2008b)
March 2009	Third printing	Revised for Version 7.0 (Release 2009a)
September 2009	Fourth printing	Revised for Version 7.1 (Release 2009b)
March 2010	Online only	Revised for Version 7.2 (Release 2010a)

## Before You Begin

### 1

<b>Hardware and Software Requirements</b> .....	1-2
PolySpace Product Requirements .....	1-2
PolySpace Plug-In Requirements .....	1-3
PolySpace Software License Requirements .....	1-5
UNIX and Linux Installation Requirements .....	1-6
PolySpace Documentation Requirements .....	1-6
<b>DVD Contents</b> .....	1-7
<b>PolySpace Installation Options</b> .....	1-10
<b>PolySpace Software Installation Folders</b> .....	1-12

## Installing PolySpace Software

### 2

<b>Overview</b> .....	2-2
PolySpace Products You Can Install .....	2-2
PolySpace Client Software .....	2-2
PolySpace Server Software .....	2-3
<b>Installing the PolySpace Software</b> .....	2-4
Before Starting the Installation .....	2-4
Installing the Software .....	2-4
Configuring the PolySpace Server Software .....	2-10
Activating PolySpace Software .....	2-14
PolySpace Software Icons .....	2-25
<b>Launching Installation from Command Line</b> .....	2-26
Installing Software on a Linux or UNIX Platform .....	2-26

Installing Software in Silent Mode .....	2-26
<b>Configuring PolySpace Software .....</b>	<b>2-28</b>
Configuring the PolySpace Client Software .....	2-28
Configuring the PolySpace Server Software .....	2-30

## Installing PolySpace Model Link Products

### 3

Installing PolySpace Model Link Products .....	3-2
Upgrading MATLAB Software .....	3-4
<b>Troubleshooting PolySpace Model Link SL</b>	
<b>Installation .....</b>	<b>3-5</b>
MATLAB Software Is Not Installed Locally .....	3-5
No Write Access to MATLAB Product Root .....	3-6

## Installing PolySpace UML Link RH

### 4

Installing PolySpace UML Link RH Product .....	4-2
--	-----

## Upgrading PolySpace Software

### 5

Upgrading PolySpace Client Products .....	5-2
<b>Upgrading PolySpace Server Products .....</b>	<b>5-4</b>
Overview .....	5-4
Upgrading an Active Server .....	5-4

Upgrading an Inactive Server .....	5-4
------------------------------------	-----

## Installing PolySpace C++ Add-In for Visual Studio

### 6

Installing the PolySpace C++ Add-In for Visual Studio .....	6-2
---	-----

## Installing PolySpace Plug-In for Eclipse IDE

### 7

Installing the PolySpace Plug-In for Eclipse IDE .....	7-2
--	-----

## Uninstalling PolySpace Products

### 8

<b>Uninstalling on Windows Platforms</b> .....	8-2
Should I Uninstall Previous Releases Before Installing? ..	8-2
Uninstalling the PolySpace Software .....	8-2
Uninstalling Shared Components .....	8-3
<b>Uninstalling on Linux or UNIX Platforms</b> .....	8-4
Should I Uninstall Previous Releases Before Installing? ..	8-4
Uninstalling the PolySpace Software .....	8-4
Uninstalling Shared Components .....	8-4

<b>PolySpace License Overview</b> .....	<b>9-2</b>
Overview .....	<b>9-2</b>
PolySpace Licensing Options .....	<b>9-2</b>
Obtaining a License File .....	<b>9-5</b>
<b>Common Licensing Questions</b> .....	<b>9-8</b>
Do I need a FLEXnet Server to Use an Individual License? .....	<b>9-8</b>
How Do I Identify Designated Computer and Concurrent Licenses? .....	<b>9-8</b>
What If I Have Other MathWorks Products Installed? ...	<b>9-8</b>
What If I Have an Old PolySpace FLEXnet License Server? .....	<b>9-9</b>
<b>Configuring Designated Computer Licenses</b> .....	<b>9-10</b>
Overview .....	<b>9-10</b>
Installing License Files .....	<b>9-10</b>
DC License File Format .....	<b>9-11</b>
<b>Configuring Concurrent Licenses</b> .....	<b>9-12</b>
Introduction to FLEXnet Licensing .....	<b>9-12</b>
Installing FLEXnet Manager .....	<b>9-17</b>
Configuring a Concurrent License .....	<b>9-24</b>
Installing Licenses on an Existing FLEXnet Server .....	<b>9-28</b>
<b>Checking Installed Licenses</b> .....	<b>9-29</b>
<b>License Error Messages</b> .....	<b>9-30</b>
Overview .....	<b>9-30</b>
Error -15, the FLEXnet server is unreachable .....	<b>9-30</b>
Error -5, the PolySpace feature is not available .....	<b>9-31</b>
Error -21, the maintenance date has expired .....	<b>9-31</b>
Error -10, the license date has expired .....	<b>9-31</b>







# Before You Begin

---

- “Hardware and Software Requirements” on page 1-2
- “DVD Contents” on page 1-7
- “PolySpace Installation Options” on page 1-10
- “PolySpace Software Installation Folders” on page 1-12

## Hardware and Software Requirements

In this section...
“PolySpace Product Requirements” on page 1-2
“PolySpace Plug-In Requirements” on page 1-3
“PolySpace Software License Requirements” on page 1-5
“UNIX and Linux Installation Requirements” on page 1-6
“PolySpace Documentation Requirements” on page 1-6

### PolySpace Product Requirements

Before you install PolySpace® software on a client or server workstation, your hardware and software must meet the following requirements.

Requirement	32-Bit and 64-Bit Client	32-Bit and 64-Bit Server
RAM	1024 MB minimum 2 GB ECC RAM recommended	2 GB minimum 4 GB ECC RAM recommended
Processor	Any Intel or AMD x86 processor supporting SSE2 instruction set SPARC® and ultraSPARC	
Operating system	<p><b>Linux:</b><sup>1</sup></p> <ul style="list-style-type: none"> <li>• Red Hat Enterprise Linux® 5.x</li> <li>• OpenSuSE 11.1</li> <li>• Debian 5.x</li> <li>• Ubuntu 8.04, 8.10, 9.04, and 9.10</li> </ul> <p><b>Solaris:</b></p> <ul style="list-style-type: none"> <li>• Solaris™ 10</li> </ul> <p><b>Windows:</b></p>	

Requirement	32-Bit and 64-Bit Client	32-Bit and 64-Bit Server
	<ul style="list-style-type: none"> <li>• Windows® XP (SP3)</li> <li>• Windows Server® 2003 (R2 SP2)</li> <li>• Windows Vista™ (SP1 or SP2)</li> <li>• Windows Server 2008 (SP2 or R2) and 2008)</li> </ul> <p>For Windows systems, you must also install Microsoft® .NET Framework 3.5</p>	
Disk space	2 GB	
Swap space	At least twice the RAM size.	
Multi-core support	PolySpace verification benefits from using multi-core processors. The recommended hardware is 4 core processors with 2 GB of RAM per core.	

---

**Note** The Mathworks recommends using a Linux PC.

---

## PolySpace Plug-In Requirements

Before you install PolySpace link products or plug-ins, your hardware and software must meet the following requirements.

1. The listed distributions are those Linux distributions that MathWorks products have been validated against. It is likely that other distributions with kernel version 2.6 or later and glibc version 2.5 or later can successfully run MathWorks products, but The MathWorks will be in a limited position to provide technical support for those distributions.

<b>Product</b>	<b>Plug-In Software</b>	<b>Release</b>	<b>Operating System</b>
<b>PolySpace Model Link™ SL</b>	MATLAB®	R2008a, R2008b, R2009a, R2009b, R2010a	Windows
	Real-Time Workshop® Embedded Coder™	R2008a, R2008b, R2009a, R2009b, R2010a	Windows
<b>PolySpace Model Link TL</b>	MATLAB	R2008a, R2008b, R2009a, R2009b, R2010a	Windows
	TargetLink® (dSPACE®)	3.0	Windows
<b>PolySpace UML Link™ RH</b>	Rhapsody® (Telelogic®)	7.2, 7.3, and 7.4	Windows
<b>PolySpace C++ add-in for Visual Studio® (C++ only)</b>	Microsoft Visual Studio .NET 2003	7.1 (SP1)	Windows
	Microsoft Visual Studio 2005	8.0	Windows
<b>PolySpace plug-in for Eclipse IDE</b>	Eclipse IDE	3.4 and 3.5	Linux, Solaris, Windows
	Java	1.6	
<b>Excel Macros</b>	Microsoft® Excel®	2003 and 2007	Windows

## PolySpace Software License Requirements

PolySpace software provides two licensing options that, when combined with the supported installation types, provide flexibility in redeploying product licenses to different users.

PolySpace software provides the following license options.

License Option	Protection	Description
<b>Designated Computer (Individual)</b>	MAC address or serial disk number of the designated computer	DC licenses are only for PolySpace client software. DC licenses are appropriate for users who want to install and administer the client software themselves.  A DC license is provided in a text file.
<b>Concurrent</b>	MAC address or serial disk number of the FLEXnet® server	Concurrent licenses are for both PolySpace client and server software. Concurrent licenses are appropriate for organizations that use license keys to control software access.  Concurrent licenses require a FLEXnet license manager.

---

**Note** For more information, see Chapter 9, “PolySpace License Installation”. This chapter describes the licensing options in detail, and how to install the FLEXnet license manager.

---

## **UNIX and Linux Installation Requirements**

### **Configuration**

Ensure that the /tmp folder contains at least 10 MB of free space.

### **Environment Settings**

- User path must include *PolySpaceInstallDir/bin* (to launch the product without using the absolute path).
- Place the PolySpace license file in *PolySpaceInstallCommon/licenses/license.dat*.
- PolySpace Graphical User Interfaces require **CDE** window manager on Solaris Open Software environment and **Gnome** on Linux. Behavior on other Window managers is unpredictable.

For more information about installation folders, see “PolySpace Software Installation Folders” on page 1-12.

### **Access Rights**

You must have Read and Execution access rights for all PolySpace software installation.

## **PolySpace Documentation Requirements**

The PolySpace documentation requires Adobe® Acrobat® Reader. If you do not have Acrobat Reader on your system, you can download it from [www.adobe.com](http://www.adobe.com).

---

**Note** The PolySpace documentation requires Acrobat Reader release 5.0 or later.

---

## DVD Contents

Depending on the products you purchase, the PolySpace DVD (or downloaded installer file) allows you to install one or more of the following PolySpace products:

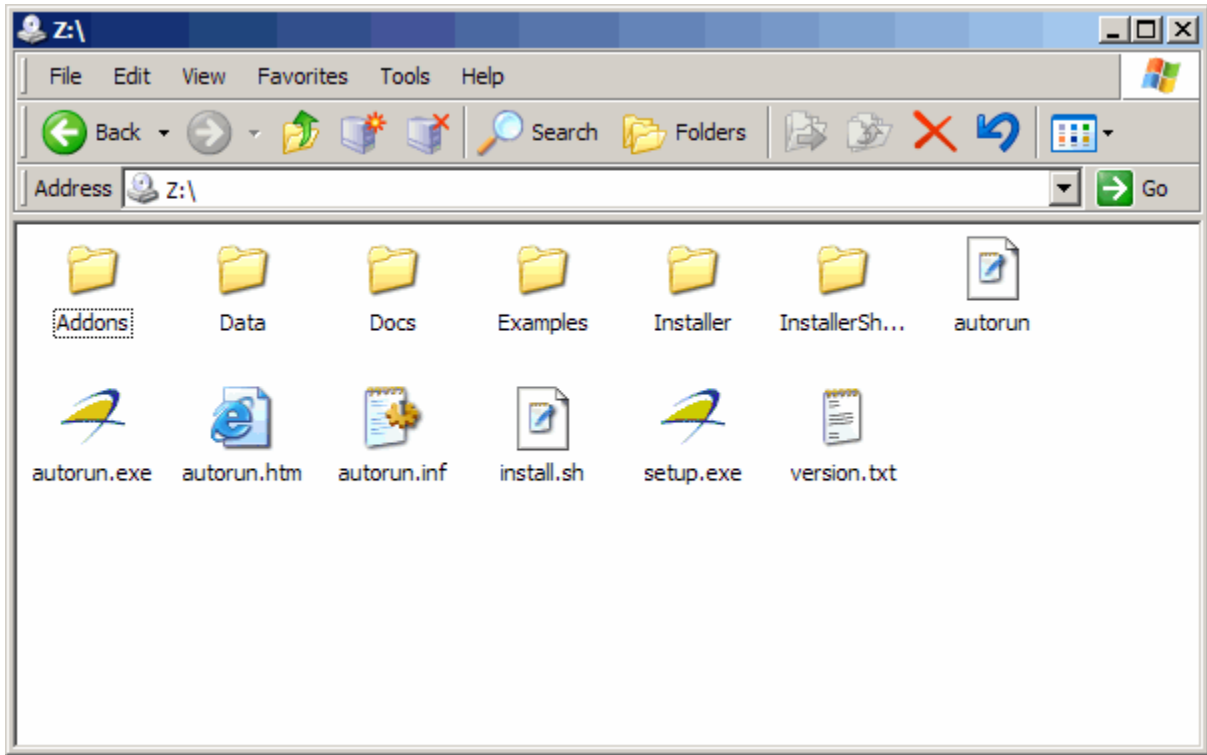
- **PolySpace® Client™ for C/C++** — Verify and review C and C++ source code.
- **PolySpace® Server™ for C/C++** — Verify C and C++ source code on a dedicated server.
- **PolySpace Client for Ada** — Verify and review Ada83 and Ada95 source code.
- **PolySpace Server for Ada** — Verify Ada83 and Ada95 source code on a dedicated server.
- **PolySpace Model Link SL** — Verify and review C source code generated using Real-Time Workshop Embedded Codersoftware from a Simulink® model.
- **PolySpace Model Link TL** — Verify and review C source code generated using TargetLink code generator from a Simulink model.
- **PolySpace UML Link RH** — Verify and review C, C++, and Ada source code generated from Rhapsody software.

---

**Note** The difference between PolySpace Server and PolySpace Client products is described in “PolySpace Installation Options” on page 1-10.

---

The DVD (or downloaded installer file) contains six subfolders and program files.



The important subfolders and programs are:

- `Setup.exe` – Runs the Graphical Installation Wizard on a Windows platform.
- `install.sh` – Runs the shell script Installation Wizard on a UNIX® platform.  
The `-console` option enables you to execute the command in a console mode.  
The `-h` option gives you command options.
- `version.txt` – Contains the complete version number of the PolySpace product that has been burned on the DVD.
- `Addons` folder – Contains useful configuration tools, available for Windows and UNIX platforms.



- Docs folder – Contains all documentation for PolySpace products, in PDF format.
- Data folder – Contains PolySpace data.
- Examples folder – Contains sample verification results from PolySpace tools (using PolySpace Client, Server, and Model Link for each language). These results can be displayed with The PolySpace Viewer, available with any of the PolySpace products.

---

**Note** Refer to the appropriate getting started guide for a quick description of the PolySpace products for your language:

- *PolySpace Products for Ada Getting Started Guide*
  - *PolySpace Products for C Getting Started Guide*
  - *PolySpace Products for C++ Getting Started Guide*
-

## **PolySpace Installation Options**

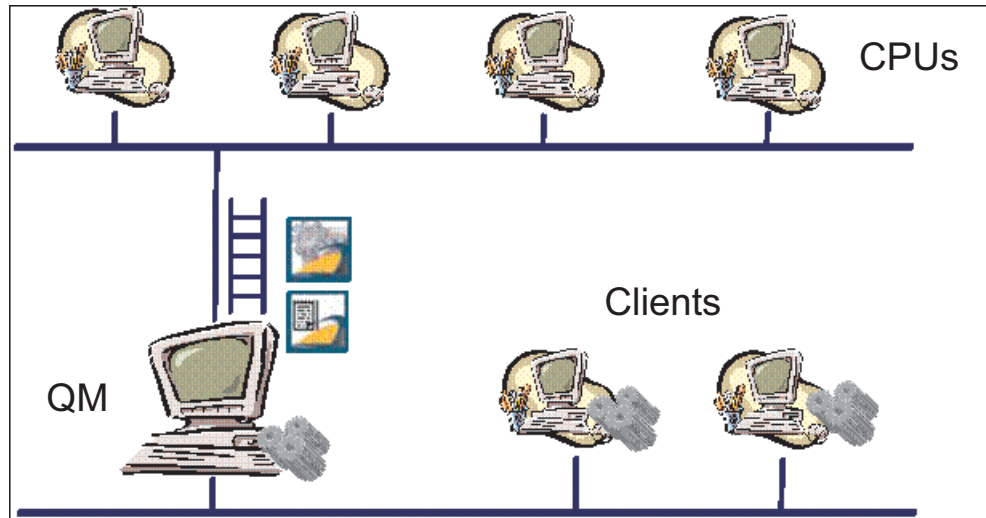
You can install the following products from the PolySpace installation DVD:

- PolySpace Client for C/C++
  - PolySpace Server for C/C++
- or
- PolySpace Client for Ada
  - PolySpace Server for Ada

A *Client* installation allows you to perform local verification, review previously completed code verifications, and send new verification requests to a dedicated server. This option is appropriate for developer workstations. The installation requires approximately 300 to 500 MB of disk space. You must have local administrator rights and access to the registry to complete the installation.

A *Server* installation allows a machine to receive verifications coming from clients. This option is appropriate for machines dedicated to PolySpace software. The installation requires approximately 300 to 500 MB of disk space. You must use a local user login with local administrator rights to complete the installation.

A PolySpace Server can receive PolySpace verification requests from any number of PolySpace Clients.



### PolySpace® Client/Server Architecture

PolySpace terminology is described in the following table.

Term	Description
PolySpace Client	Developer workstation that requests PolySpace code verifications to be performed on servers. You can install any number of client systems.
PolySpace Server	Computer that manages code verifications from a number of clients. You can configure a Server as either a Queue Manager or a CPU.
Queue Manager (QM)	A PolySpace Server that manages code verifications coming from a number of clients. The Queue Manager can run verifications itself, or simply dispatch verification jobs to other CPUs. Typically, there is only one QM system.
CPU	A PolySpace Server that is dedicated to running code verifications. A CPU receives verification jobs from the QM and runs them. It typically does nothing but perform verifications. You can install any number of CPUs.

## PolySpace Software Installation Folders

PolySpace software is installed in three folders.

- The principal folder contains the kernel of the installed PolySpace release. The default folder is `C:\PolySpace\PolySpaceForLanguage`, where *language* can be either *CandCPP* or *Ada*.
- A common components folder contains the shared components available for any language, such as the Java run time library, the PolySpace Viewer, the Remote Launcher (RL), and any add-ins (such as the PolySpace C++ add-in for Visual Studio and the PolySpace In One Click Toolbar (POC)). The default folder is `C:\PolySpace\PolySpace_Common`.
- A folder contains the Remote Launcher configuration file `polyspace.conf`. The folder is `C:\PolySpace\PolySpace_RLDatas`.

In this document, these folders are referred to as follows:

- *PolySpaceInstallDir* refers to `C:\PolySpace\PolySpaceForLanguage` (`/usr/local/PolySpace/PolySpaceForLanguage` for UNIX systems),
- *PolySpaceInstallCommon* refers to `C:\PolySpace\PolySpace_Common` (`/usr/local/PolySpace/PolySpace_Common` for UNIX systems).
- *PolySpaceRLDdatas* refers to `C:\PolySpace\PolySpace_RLDatas` (`/etc/PolySpace` for UNIX systems).

# Installing PolySpace Software

---

- “Overview” on page 2-2
- “Installing the PolySpace Software” on page 2-4
- “Launching Installation from Command Line” on page 2-26
- “Configuring PolySpace Software” on page 2-28

# Overview

In this section...
“PolySpace Products You Can Install” on page 2-2
“PolySpace Client Software” on page 2-2
“PolySpace Server Software” on page 2-3

## PolySpace Products You Can Install

This chapter describes how to install and configure the following PolySpace products:

- PolySpace Client for Ada
- PolySpace Server for Ada
- PolySpace Client for C/C++
- PolySpace Server for C/C++

## PolySpace Client Software

PolySpace Client software is the management and visualization tool of PolySpace products. You use it to submit jobs for execution by PolySpace Server, and to review verification results. The PolySpace Client software includes the following features:

- PolySpace Launcher
- PolySpace Viewer
- Data Range Specifications (DRS)
- Coding Rules Checker (MISRA C®, MISRA C++, or JSF C++)
- Report Generator
- Automatic Orange Tester

Install the PolySpace Client software on developer workstations that will send verification jobs to the PolySpace Server.

The installation requires approximately 300 to 500 MB of disk space.

## **PolySpace Server Software**

PolySpace Server software is the computational engine of PolySpace products. You use it to run jobs posted by PolySpace Clients, and to manage multiple servers and queues. The PolySpace Server software includes the following features:

- Remote Launcher
- PolySpace Queue Manager (Spooler)
- Report Generator
- HTML Generator.

Install the PolySpace Server software on machines that are dedicated to receiving verifications from clients (the Queue Manager and CPUs).

The installation requires approximately 300 to 500 MB of disk space.

# Installing the PolySpace Software

In this section...
“Before Starting the Installation” on page 2-4
“Installing the Software” on page 2-4
“Configuring the PolySpace Server Software” on page 2-10
“Activating PolySpace Software” on page 2-14
“PolySpace Software Icons” on page 2-25

## Before Starting the Installation

Before starting the installation process, ensure that you have the following:

- The PolySpace DVD (or downloaded installer file).
- Your e-mail address and password for your MathWorks account.
- A local user login with **administrator** rights.
- At least 2 GB of free disk space.

## Installing the Software

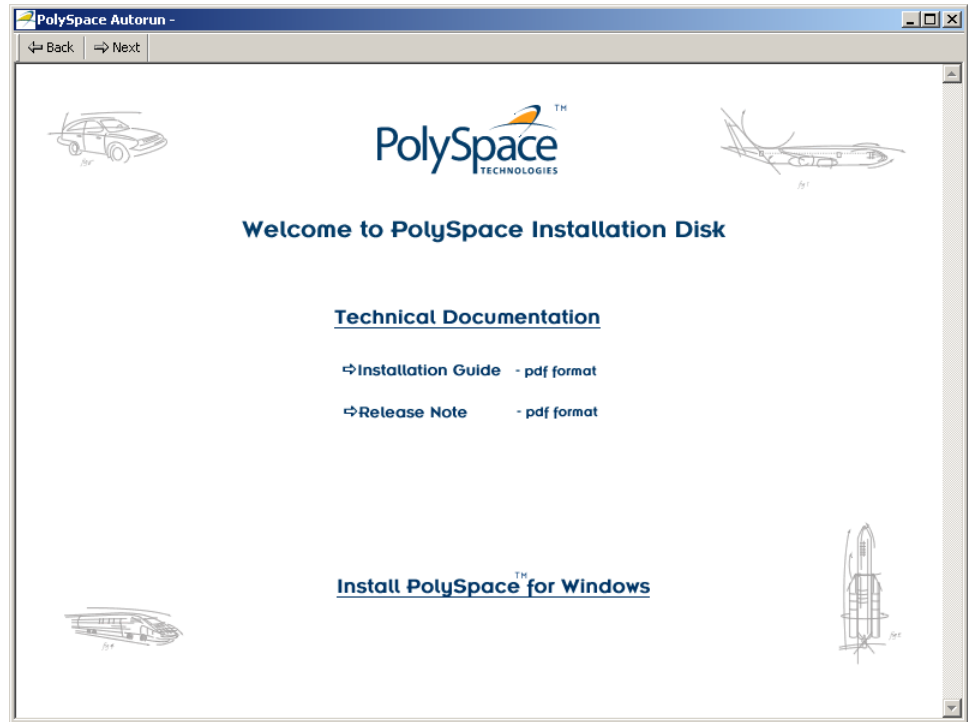
PolySpace software provides a graphical installation wizard that guides you through the installation process. This wizard is available on Solaris, Linux, or Windows platforms. The following sections describe a complete Windows installation.

To install the PolySpace software:

- 1 Insert the PolySpace DVD into your DVD drive, or double-click the installer file you downloaded from the MathWorks Web site.

The PolySpace autorun starts.





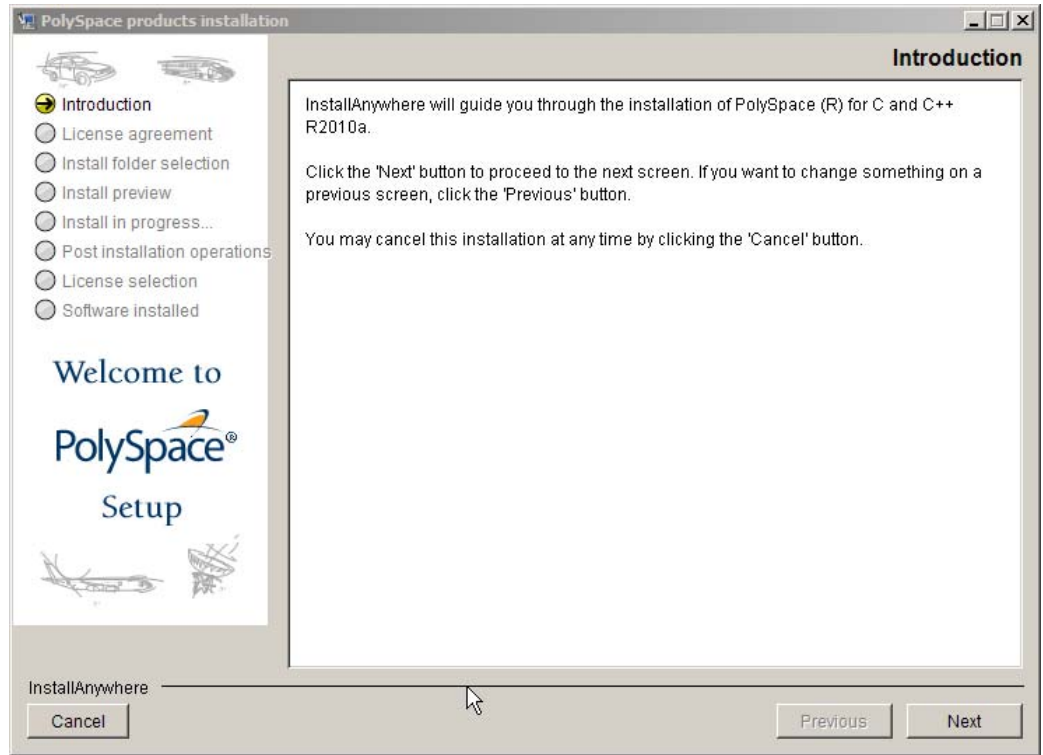
---

**Note** If you do not see the autorun window after a few minutes, launch the `setup.exe` program on the DVD.

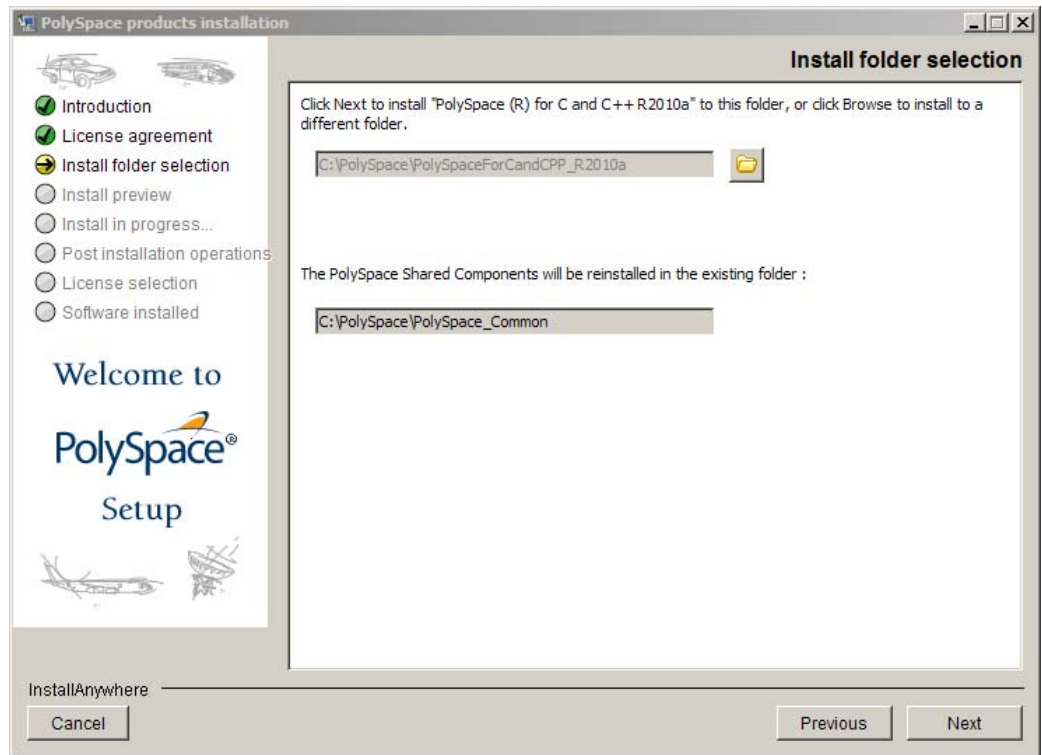
---

## 2 Click **Install PolySpace for Windows**.

The installation wizard runs, preparing PolySpace installer. This process can take a few minutes.



- 3 When the PolySpace products installation window opens, click **Next**.
- 4 In the Software License agreement window, select **I accept the terms of the license agreement**, then click **Next**.



- 5 In the Install folder selection screen, select the folders in which to install the PolySpace software and shared components.

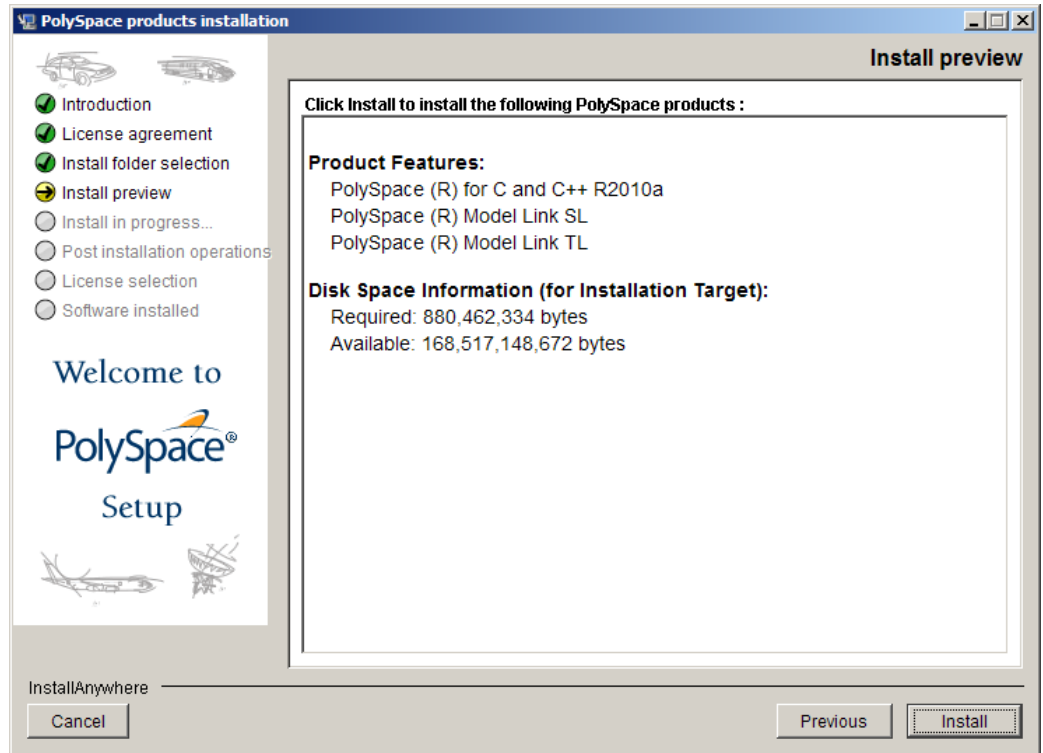
The default folder for the product software is

`C:\PolySpace\PolySpaceFor $language$`  where  $language$  can be either `CandCPP` or `Ada`.

The default folder for shared components is

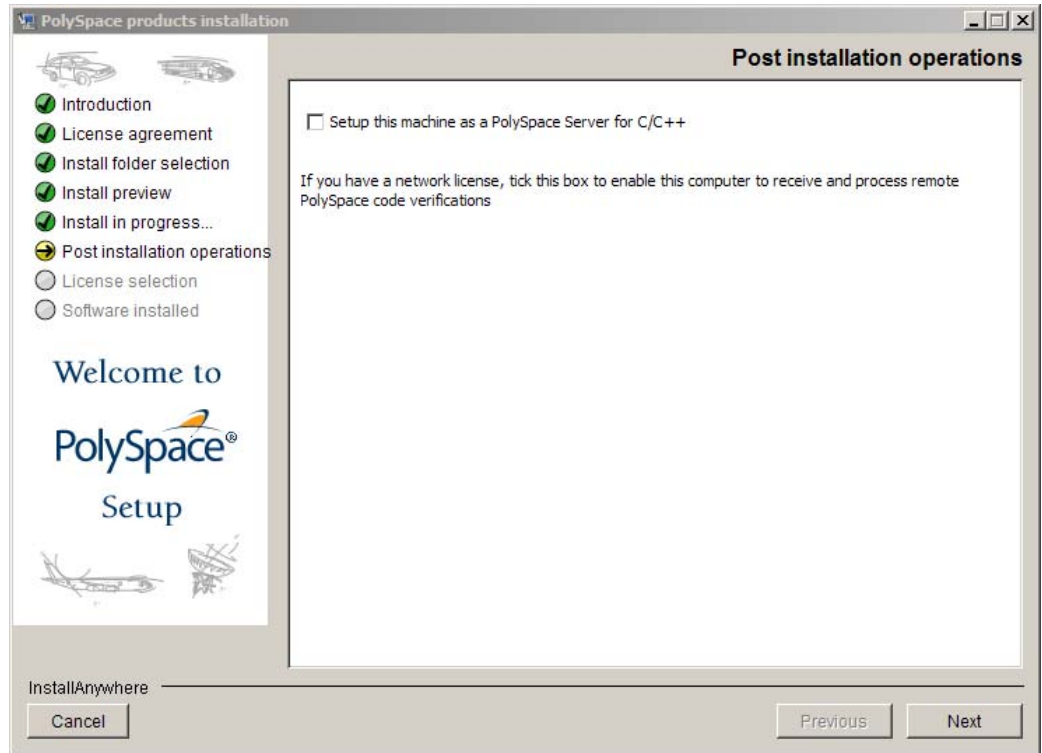
`C:\PolySpace\PolySpace_Common`.

- 6 Click **Next**.



**7** In the Install preview window, click **Install**.

- PolySpace shared components are installed and configured (this may take a few minutes).
- When shared component installation is complete, the PolySpace product software is installed (this may take a few minutes).



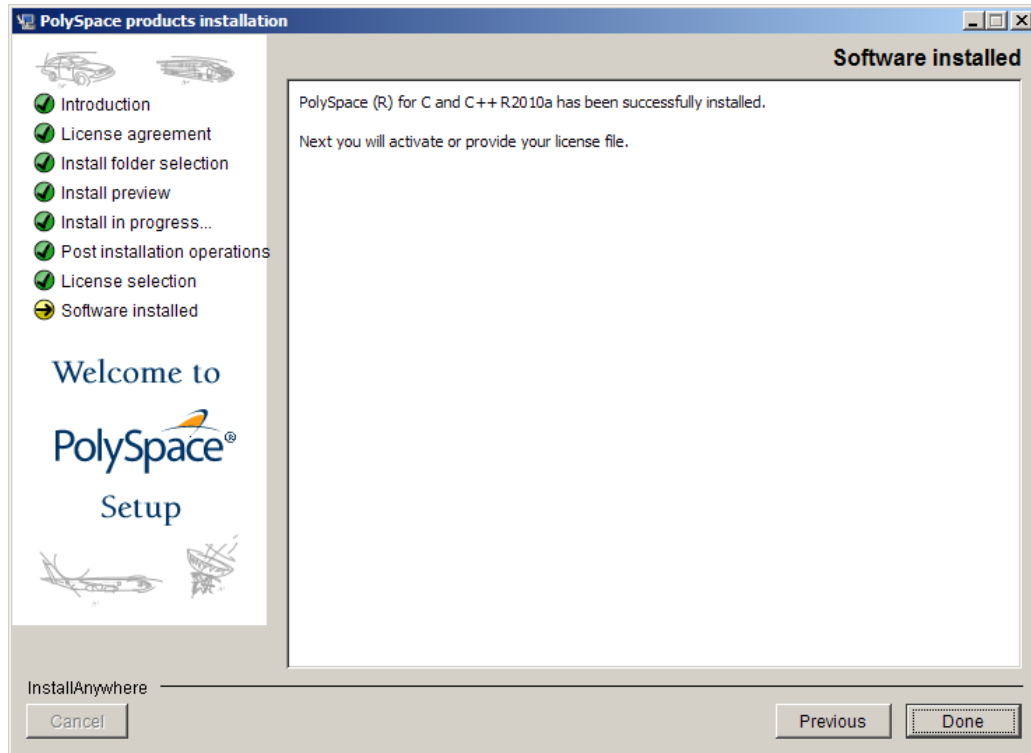
**8** In the Post Installation operations window, do one of the following:

- If you are installing a PolySpace *Server*, select **Setup this machine as a PolySpace Server**, then click **Next**.

The Software installed window and the PolySpace Remote Launcher Manager dialog box open. For information on configuring the Remote Launcher, refer to “Configuring the PolySpace Server Software” on page 2-10.

- If you are installing a PolySpace *Client*, click **Next**.

The Software installed window opens.



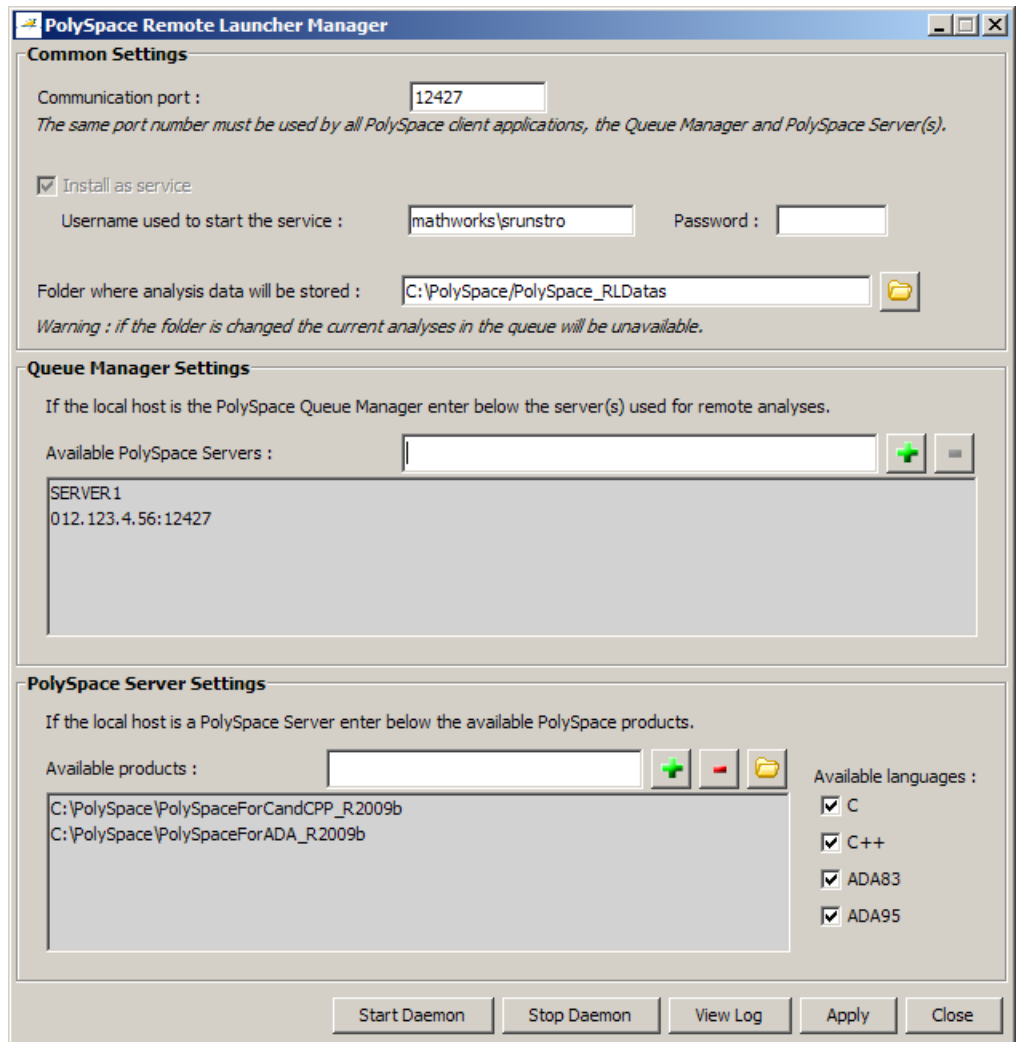
### 9 Click **Done**.

The PolySpace Software Activation dialog box opens.

Product installation is complete, but you must activate the software. For more information, see “Activating PolySpace Software” on page 2-14.

## Configuring the PolySpace Server Software

When you finish installing the PolySpace Server software, the PolySpace Remote Launcher Manager dialog box opens. You must configure the port number for the PolySpace Server to complete the software installation. Configuring the port number establishes communication between the PolySpace Server and PolySpace Clients.



To complete the server installation:

- 1 Specify the port number on which the server communicates with Clients.  
The default port number is 12427.

---

**Note** The port number must be the same as the port number for all PolySpace Clients.

---

- 2 To install the server as a service on a Windows machine (or a daemon on a Linux or Solaris machine), select **Install server as service (daemon)**, then enter the user name and password to start the server as a service or daemon.

---

**Note** Password is not required on a Linux or Solaris machine.

---

If you do not select **Install server as service (daemon)**, you must configure the server manually after installation. See “Manual Configuration of the PolySpace Server” on page 2-32.

- 3 Click **Start Daemon**.

You see a message that the configuration has been saved.

- 4 Click **Yes** to start the Daemon.

- 5 Click **Yes** to save your settings.

The Start Daemon log window appears.



```

Start Daemon
*****
Host : runs
User : MATHWORKS\srun
Checking files locations ...
- data directory (C:\PolySpace\PolySpace_RLDatas)
- locks directory (C:\PolySpace\PolySpace_RLDatas/locks)
- upgrades directory (C:\PolySpace\PolySpace_RLDatas/upgrades)
- log file (C:\PolySpace\PolySpace_RLDatas/polyspaced.log)
*****
* Checking CPUs configuration ... *
*****
Checking configuration for CPU runs: ...
Processor : <unknown>
R.A.M. : 1023 Mb
O.S. : Microsoft Windows (MINGW32_XP-5.1)
User : MATHWORKS\srun
Checking files locations ...
- data directory (C:\PolySpace\PolySpace_RLDatas)
- locks directory (C:\PolySpace\PolySpace_RLDatas/locks)
- log file (C:\PolySpace\PolySpace_RLDatas/polyspaced.log)
- product 1 :
  - installation directory : C:\PolySpace\PolySpaceForCandCPP_INFRA.2008a\Verifier
  - version : INFRA_2008a
- supported languages : C CPP ADA95
The CPU is free.
Checking PolySpace licenses ...
Warning: An unexpected error occured while checking the ADA95 license for product I
=====
=> The configuration is now correct.
=====
Installing the polyspaced service ...
Setting service logon right for user MATHWORKS\srun ...
Starting the polyspaced service ...

```

The Remote Launcher Manager checks product paths, licenses, and the creation and start up of the service (daemon). When the configuration check is complete, the message “Start of the daemon has succeeded.” appears.

---

**Note** If a problem occurs, an error message appears at the bottom of the screen. If you get an error, see “Troubleshooting Common Errors” on page 2-36.

---

**6** When you see the message “Start of the daemon has succeeded,” click **OK**.

**7** Click **Close** to close the Remote Launcher Manager

The PolySpace Server installation is complete.

---

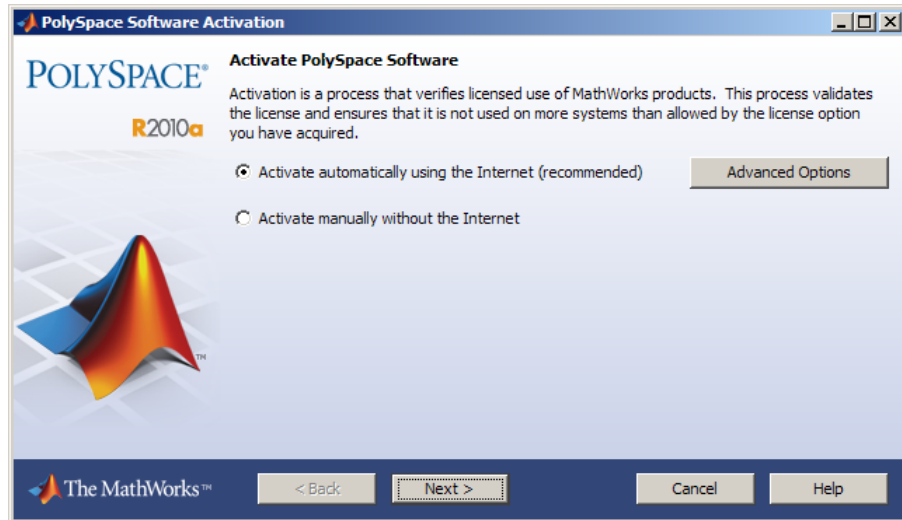
**Note** By default, the server becomes the first CPU of the architecture.

---

### **Activating PolySpace Software**

*Activation* is a process that verifies licensed use of MathWorks™ products. The process validates your product licenses and ensures that they are used correctly. You must complete the activation process before you can use PolySpace software.

When you finish installing the PolySpace software, the PolySpace Software Activation dialog box opens.



If you are using Designated Computer (Individual) licenses, you must activate the license for each PolySpace system individually. However, if you are using Concurrent licenses for multiple PolySpace systems, you do not need to activate each PolySpace system. You activate the license once (for the FLEXnet license server), then provide license files for each PolySpace system.

To complete the activation process, refer to the following sections:

- “Activating With Existing License File” on page 2-16
- “Activating Automatically (With Internet Connection)” on page 2-17
- “Activating Manually (Without Internet Connection)” on page 2-21

If you cancel the activation process, you can activate the software at any time after installation by selecting **Start > Programs > PolySpace > Activation Client**.

---

**Note** The Activation Client is not supported on Solaris systems. If you are installing PolySpace software on a Solaris system, go to the MathWorks License Center to retrieve a license file, then provide the path to your `license.dat` file during installation.

---

For more information on software activation, including frequently asked questions, refer to the MathWorks website:  
[www.mathworks.com/support/activation/polyspace.html](http://www.mathworks.com/support/activation/polyspace.html)

### Activating With Existing License File

If you have an existing license file for the software that you are installing, you can provide a path to the license file to complete the activation process. You do not need to access the MathWorks License Center.

For example, if you use concurrent licenses for PolySpace software, your license manager provides a license file for each PolySpace system. You do not activate the software on each system, you just provide a path to this license file.

---

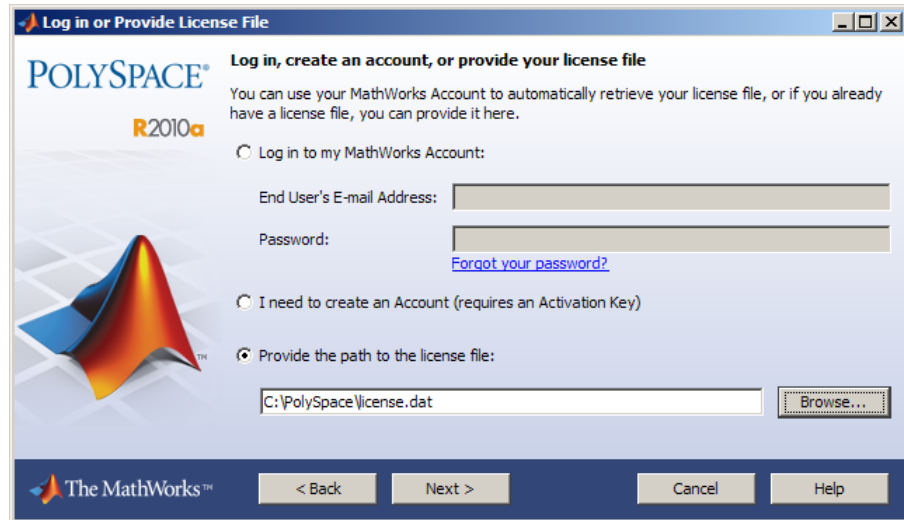
**Note** With concurrent licenses, a FLEXnet license server manages licensing of individual systems. You manually activate the concurrent license once (using the License Center at the MathWorks web site), and then provide license files for each PolySpace system. For more information, see “Configuring Concurrent Licenses” on page 9-12.

---

To activate with an existing license file:

- 1 In the PolySpace Software Activation dialog box, select **Activate automatically using the Internet**, then click **Next**.

The Log In or Provide License File dialog box appears.



**2** Select **Provide the path to the license file**.

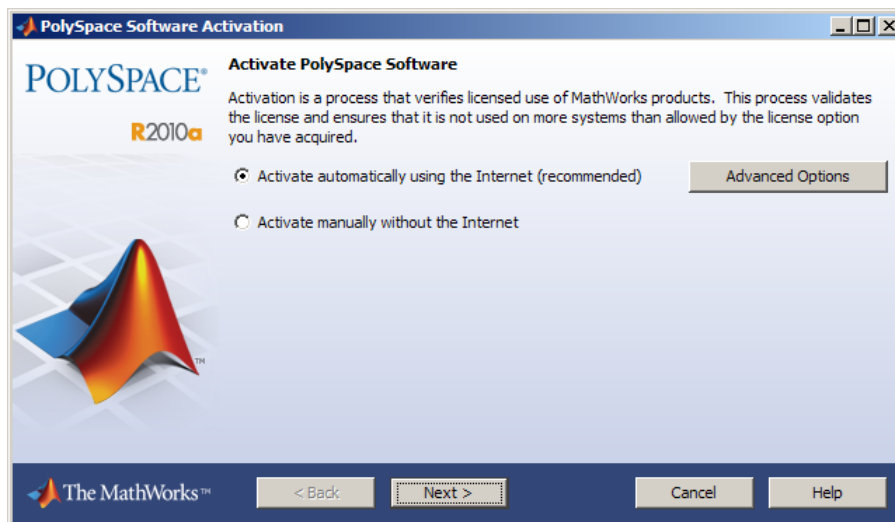
**3** Enter the path to your license file, then click **Next**.

The Activation Complete dialog box appears.

**4** Select **Finish** to close the Activation Client.

### **Activating Automatically (With Internet Connection)**

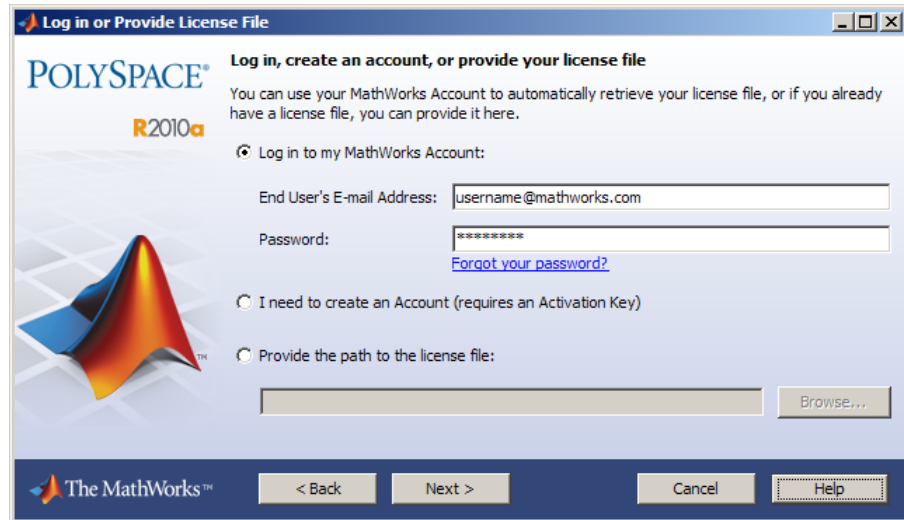
If your PolySpace system is connected to the Internet, you can activate your software automatically after installation. This process involves logging in to your MathWorks account, and selecting the license that you want to activate.



To activate your software automatically:

- 1 In the PolySpace Software Activation dialog box, select **Activate automatically using the Internet**, then click **Next**.

The Log in or Provide License File dialog box appears.



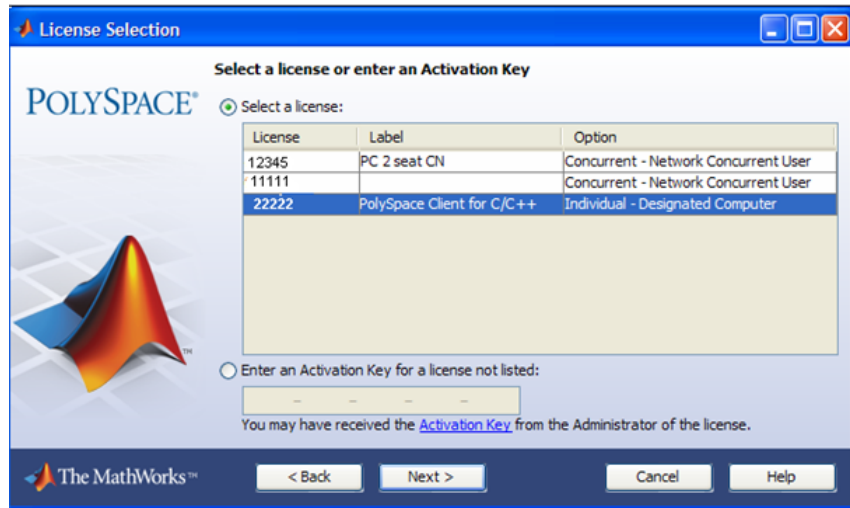
- 2 Enter the login information for your MathWorks account, then click **Next**.

---

**Note** If you do not have a MathWorks account, select **I need to create and Account**, and follow the instructions to create one.

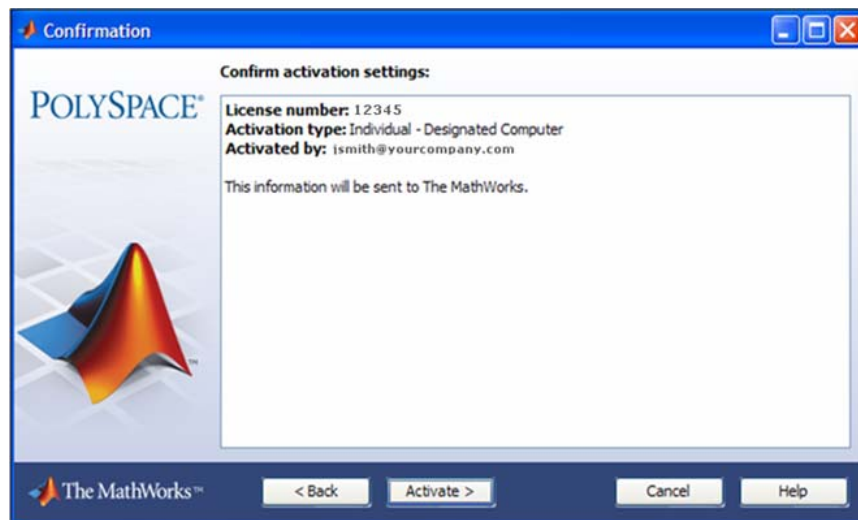
---

The License Selection dialog box appears.



**3** Select the license you want to activate, then click **Next**.

The Confirmation dialog box appears.



**4** Select **Activate**.

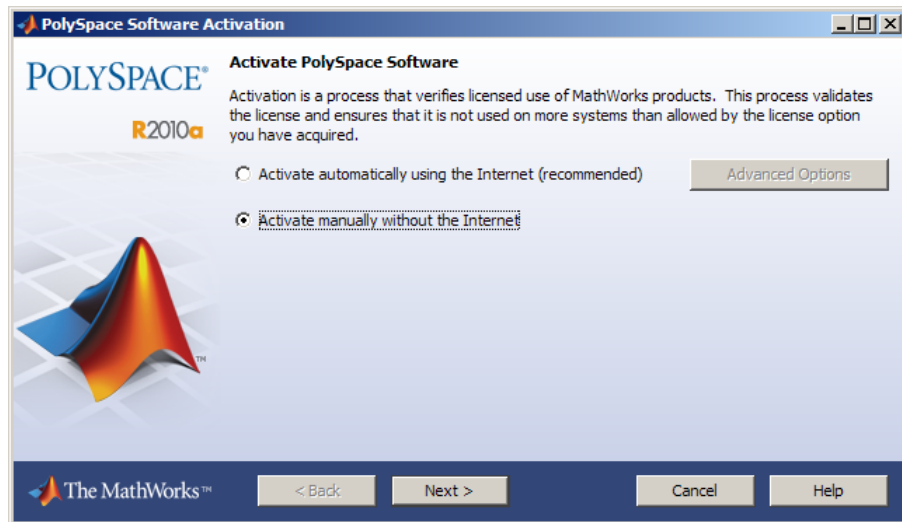


Your license file is automatically copied to the PolySpace system.

- 5 In the Activation Complete dialog box, select **Finish** to close the Activation Client.

### Activating Manually (Without Internet Connection)

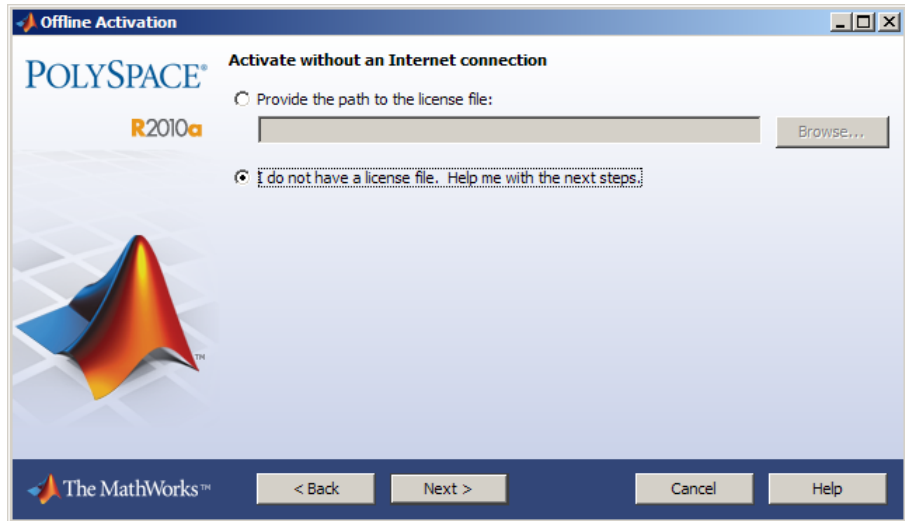
If your PolySpace system does not have an Internet connection, you must activate your software manually. This process involves accessing the MathWorks License Center from another computer, then manually copying your license file to the PolySpace system.



To activate your software manually:

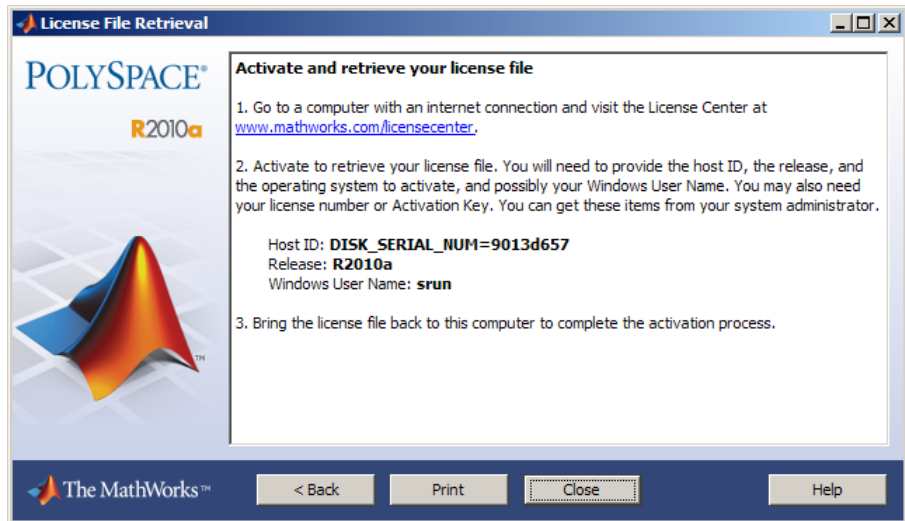
- 1 In the PolySpace Software Activation dialog box, select **Activate Manually without the Internet**, then click **Next**.

The Offline Activation dialog box appears.

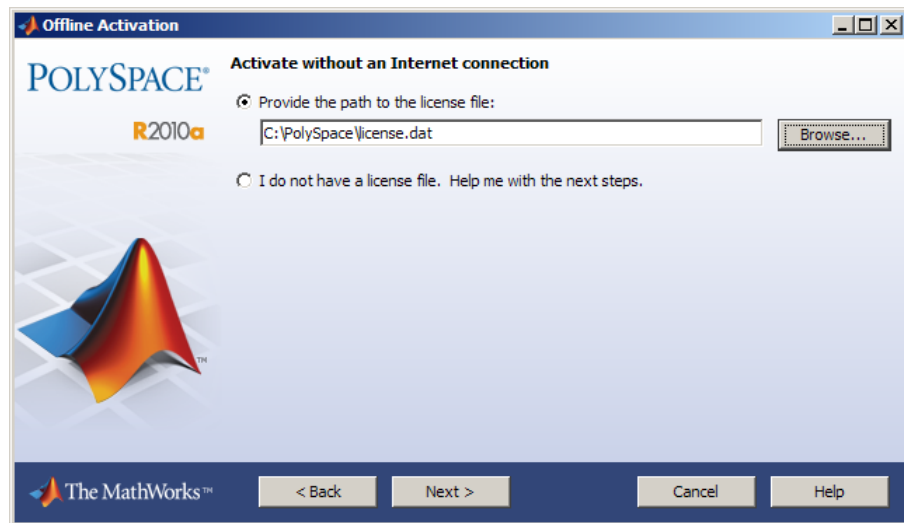


**2** Select **I do not have a license file**, then click **Next**.

The License File Retrieval dialog box displays the information that you need to activate your software.



- 3 Save the information displayed in the License File Retrieval dialog box. For example, you can print a copy by clicking **Print**.
- 4 Go to a computer with an Internet connection, and then go to the License Center at the MathWorks Web site:  
<http://www.mathworks.com/licensecenter>
- 5 Activate your license, then download your license file.  
  
For more information, see the License Center Help.
- 6 Copy your license file to the PolySpace system.
- 7 Return to the Offline Activation dialog box, then select **Provide the path to the license file**.



---

**Note** If you closed the Activation window, select **Start > Programs > PolySpace > Activation Client** to restart it.

---

- 8 Enter the path to your license file, then click **Next**.  
  
The Activation Complete dialog box appears.

9 Select **Finish** to close the Activation Client.

## PolySpace Software Icons

After you complete the installation, three icons appear on your desktop:



- **PolySpace Launcher** — The graphical user interface you use to set up a verification project and launch verification of your source code..
- **PolySpace Viewer** — The graphical user interface you use to explore the results computed by PolySpace Client and PolySpace Server software.
- **PolySpace Spooler** — The graphical user interface you use to manage verifications sent to PolySpace Servers.

# Launching Installation from Command Line

<b>In this section...</b>
“Installing Software on a Linux or UNIX Platform” on page 2-26
“Installing Software in Silent Mode” on page 2-26

## Installing Software on a Linux or UNIX Platform

To install PolySpace products on a Linux or UNIX system, execute the following command in a terminal window:

```
DVD/install.sh
```

This script launches the installation wizard. To complete the installation, refer to “Installing the PolySpace Software” on page 2-4.

---

**Note** If you are using the **Gnome** window manager in Linux or the **CDE** window manager in Solaris, click `Linux.bin` or `Solaris.bin` in the root of the DVD path to use the graphical installation wizard.

---

## Installing Software in Silent Mode

By default, `-silent` mode performs a PolySpace software installation using default parameters (auto server mode and 12427 for the port).

---

**Note** If you are installing a PolySpace Server using silent mode, the PolySpace Remote Launcher Manager does not open automatically. After installing the software, you must configure the PolySpace server settings. For more information, see “Configuring the PolySpace Server Software” on page 2-30.

---

## UNIX Platforms

To install the software on a UNIX system using silent mode, execute the following command in a terminal window:

```
DVD/install.sh -silent -install-dir PolySpaceInstallDir
```

where *PolySpaceInstallDir* represents the installation folder.

The common components are automatically installed at the same level as the installation folder that you choose, or if it exists, in the existing *PolySpace\_Common* folder.

## **Windows Platforms**

To install the software on a Windows system using silent mode, execute the following .bat file in a command prompt shell:

```
DVD\DATA\Windows\setup_silent.bat PolySpaceInstallDir
```

The common components are automatically installed at the same level as the installation folder that you choose, or if it exists, in the existing *PolySpace\_Common* folder.

# Configuring PolySpace Software

### In this section...

“Configuring the PolySpace Client Software” on page 2-28

“Configuring the PolySpace Server Software” on page 2-30

## Configuring the PolySpace Client Software

### Initial Configuration

By default, the PolySpace Client is configured to automatically detect a PolySpace Server on the network using port 12427.

### Manually Configuring the PolySpace Client

By default, the PolySpace Client automatically detects any available PolySpace Server configured as a Queue Manager on the network. However:

- If the Client finds more than one PolySpace Server, the Client displays an error message listing the names of all detected servers. Carefully note all names and close the error dialog box.
- If no PolySpace Server is available, you see the “No QueueManager server found” error message when you launch a verification or execute any PolySpace command.

In these cases, you can specify a specific Queue Manager server associated to a specific port number to correct the error.

To manually configure the remote server:

- 1 Double-click the **PolySpace Launcher** icon on your desktop.





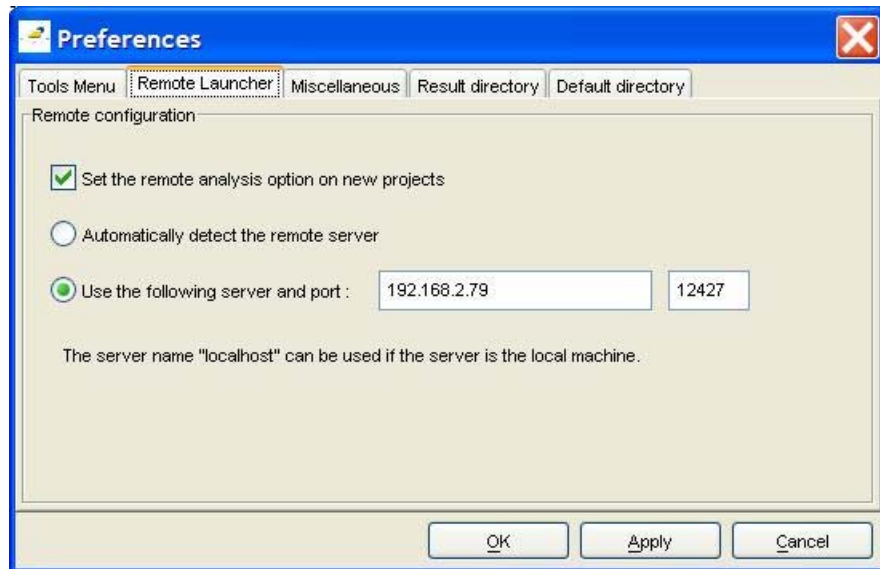
---

**Note** On a UNIX system, enter the command  
*PolySpaceInstallDir/Launcher/bin/polyspace-launcher*.

---

**2** Select **Edit > Preferences**.

The Preferences dialog box appears.



**3** Select the **Remote Launcher** tab.

**4** Select the **Use the following server and port** radio button.

**5** Enter an IP address (or server name) and associated port number for the PolySpace Server.

**6** Click **OK**.

The preferences are stored in the PolySpace-Launcher.prf preferences file in *user home folder/.rte* folder (C:\Documents and Settings\*user name*\.rte on a Windows system).

---

**Note** Although you can modify this file with an ASCII editor, you should not do so. You should always use the graphical user interface to modify the remote launcher settings.

---

### Configuring the PolySpace Server Software

- “Initial Configuration” on page 2-30
- “Graphical Configuration of the PolySpace Server” on page 2-30
- “Manual Configuration of the PolySpace Server” on page 2-32
- “Configuration File and Folder” on page 2-35
- “Installing a New CPU” on page 2-36
- “Troubleshooting Common Errors” on page 2-36

#### Initial Configuration

You perform initial configuration of the PolySpace Server software during installation (see “Configuring the PolySpace Server Software” on page 2-10).

After installation, the PolySpace Server becomes the first CPU of the architecture by default.

---

**Note** All the information displayed in the Remote Launcher configuration window during installation is automatically saved as ASCII text in the file *PolySpaceInstallCommon/*  
*../PolySpace\_RLData/polyspaced.log(/var/PolySpace/polyspaced.log*  
*file in UNIX).*

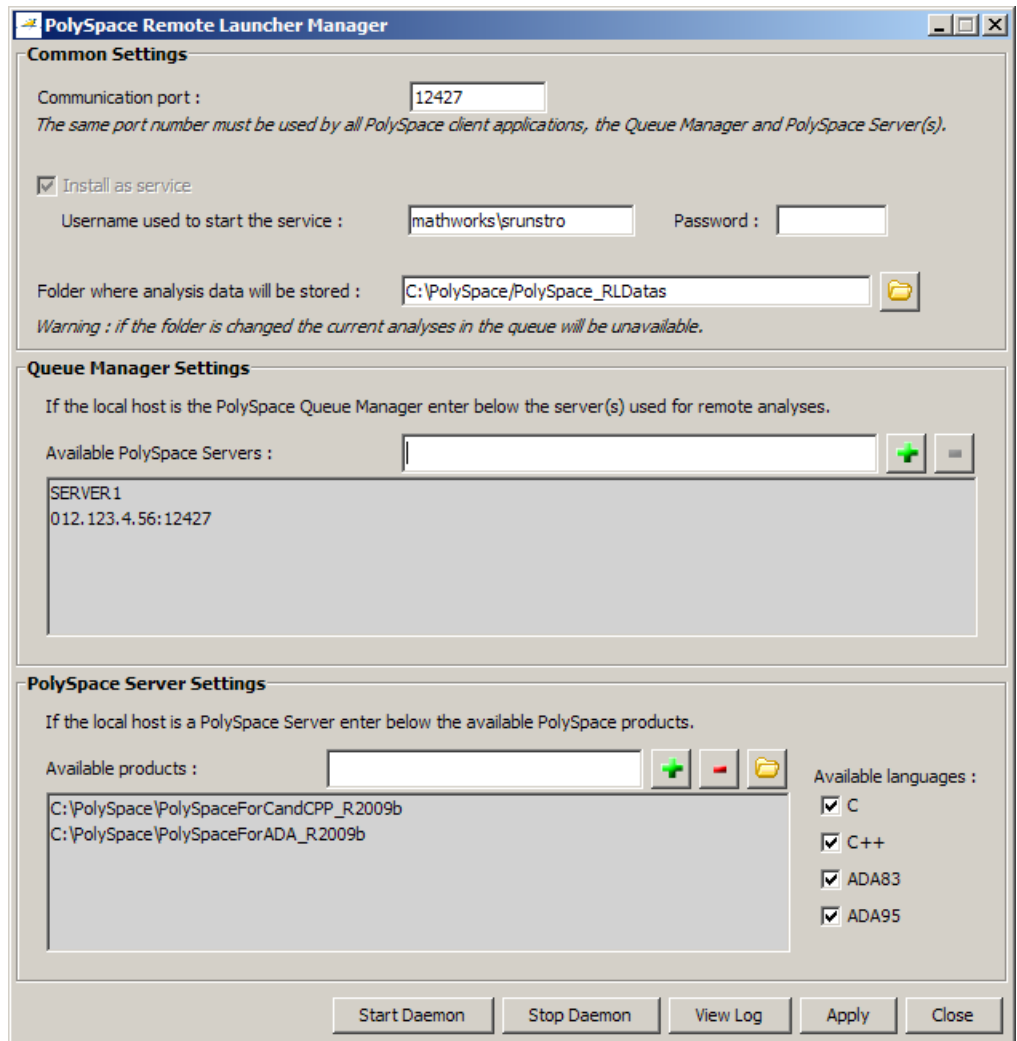
---

#### Graphical Configuration of the PolySpace Server

The default Server configuration assumes that the Server is both the Queue Manager and a CPU.

The Queue Manager can be configured or updated graphically (on Windows systems) or using a shell command using a graphical user interface:

The “Remote Launcher Manager” command is accessible using the menu **Start > Programs > PolySpace** or the exe command `PolySpaceInstallCommon/RemoteLauncher/PSTRManager.exe` allows to configure and update the Queue Manager and associated `polyspace.conf` file.



The “Common Settings” dialog allows setting port and locations of the Queue Manager as a Windows service. Note that it is mandatory to stop the current Queue Manager before any change or update of the parameters. Please use first the “Stop Daemon” button.

The “Queue Manager Settings” allows setting the address of the Queue Manager and all attached CPU of the Remote Launcher. The syntax “<describing name/IP address>[:<port number>]” attaches a CPU.

In the previous figure, “SERVER1” is the Queue Manager and “012.123.4.56:12427” represents a CPU with a specific port number.

The last sub-window “PolySpace Server Settings” allows setting PolySpace products locations and language.

---

**Note** All information displayed during the execution of commands like “Start Daemon”, “Stop Daemon” are also written in the polyspaced.logfile in <PolySpaceInstallCommon>/../PolySpace\_RLDatas(/var/PolySpace under UNIX).

---

### Manual Configuration of the PolySpace Server

A configuration of the Server/Verifier, Queue Manager of the Client/Server architecture has been stored in a standard file. A default configuration is generated during the installation: the current machine is at the same time the Queue Manager, and the distant machine.

The batch command

`PolySpaceInstallCommon/RemoteLauncher/bin/setup-remote-launcher` can be used to create or destroy the configuration file. It is called `polyspace.conf`. It may be found:

- For administrator or user on a Windows OS system  
at: `PolySpaceInstallCommon/../PolySpace_RLDatas`  
(`c:\PolySpace\PolySpace_RLDatas`)
- For administrator or user on a UNIX OS system: `/etc/PolySpace`

The configuration file contains fields which set a Queue Manager and CPU architecture:

- `product=` — It determines the installation folders of PolySpace Verifier. It is possible to have one per language.
- `lang=` — It determines the supported verification languages. The language variable specifies the supported language declaration (CPU only). The values may be: C, C++, CPP, Ada, Ada83, ADA, Ada95 and ADA95.
- `username=` — . The username variable specifies the user name used to run the daemon process. If the daemon is started as root on UNIX, it will automatically change its user ID to run as the given user.
- `datadir=` — The data directory name identifies the place where the data sent remotely are stored.
- `locksdir=` — The locks directory identifies the place where the locks are stored. `<datadir>/locks` will be used by default without specified field.
- `port=` — The port number on which the daemon is listening (default value is 12427). The available port can be specified between *10000* to *15000*. This range depends on the available OS requirements.
- `cpu=` — The CPU name and port specifies available Queue Manager and CPUs. Syntax can be `<address IP or name of CPU>[:port number]`. If more than one `cpu=` is specified, others are CPUs where the Queue Manager can dispatch verifications.

Any change in the configuration file except for the `cpu=` field (for example, to add a new CPU, see next paragraph), the associated daemon/service manager need to be stopped and re started:

- `PolySpaceInstallCommon/RemoteLauncher/bin/setup-remote-launcher-stop-service` is used to stop the service. Note that any standard program on OS can stop the service or daemon.
- `PolySpaceInstallCommon/RemoteLauncher/bin/setup-remote-launcher-start-service` is used to start or restart the service. Note that any standard program associated to the OS can restart the service or daemon.

---

**Note** `PolySpaceInstallCommon/RemoteLauncher/bin/setup-remote-launcher -h` gives available options

---

If you did not select the Queue Manager as a service (daemon) during installation, use the following commands to install it:

- **Windows platform:**

`PolySpaceInstallCommon/RemoteLauncher/bin/InstallPolySpaceService.bat`

---

**Note** The Windows service can also be managed like other services using the **My Computer > Manage > Services and Applications** menu.

---

- **UNIX platform:**

`PolySpaceInstallCommon/RemoteLauncher/bin/setup-remote-launcher -install-service`

---

**Note** The PolySpace daemon can also be managed like other daemon in the `/etc/init.d` install services folder.

---

You can then launch the `polyspaced` service (daemon) using the following commands:

- `PolySpaceInstallCommon/RemoteLauncher/bin/polyspaced -stop` — Stops the Queue Manager.
- `PolySpaceInstallCommon/RemoteLauncher/bin/polyspaced` — Starts or restarts the Queue Manager.

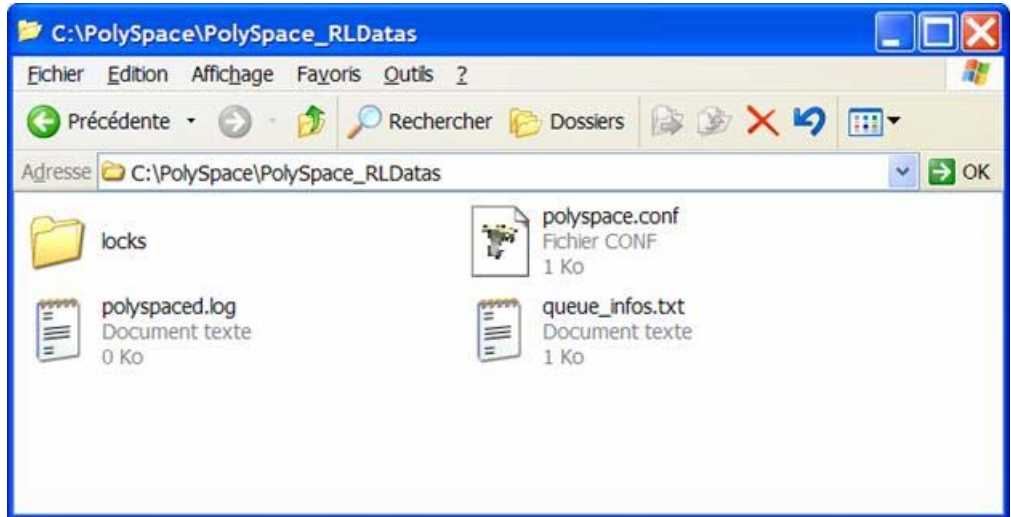
---

**Note** `<PolySpaceInstallCommon>/RemoteLauncher/bin/polyspaced -h` gives available options.

---

## Configuration File and Folder

We can find in the <PolySpaceInstallCommon>/../PolySpace\_RLData folder the following files and folders:



- The polyspaced.log file contains installation log information as well as all communication between clients and the Queue Manager during the Queue Manager life.
- The queue\_infos.txt file contains information of the Queue Manager spooler.
- The locks folder contains the locks file for each verification.
- polyspace.conf is the configuration file. An example of a Server/Verifier polyspace.conf configuration file looks like this:

```
product=c:\PolySpace\PolySpaceForCandCPP
product=c:\PolySpace\PolySpaceForAda
lang=Ada95
lang=C
lang=CPP
datadir=c:\PolySpace\PolySpace_RLData
username=bard
cpu=BERGERON
```

```
cpu=192.168.2.79:12428
```

In this example, the BERGERON cpu has been configured to be a Queue Manager and a CPU of C, CPP and Ada95 code verifications on default port 12427. The product installed in `c:\PolySpace\PolySpaceForCandCPP` will be used. Moreover, another CPU of address IP 192.168.2.79 has been declared on port 12428.

On a UNIX system, the directory location containing locks and `datadir` by default is `/var/PolySpace`.

### Installing a New CPU

Installing a new CPU is very simple: just follow the standard PolySpace Server installation. Then, edit the `polyspace.conf` of the CPU which has been chosen as Queue Manager, and add the new CPU using the field `cpu=<describing name/IP address>[:<port number>]`

See the following example where there are two declared CPUs.

```
product=c:\PolySpace\PolySpaceForCandCPP
product=c:\PolySpace\PolySpaceForAda
lang=Ada95
lang=C
lang=CPP
datadir=c:\PolySpace\PolySpace_RLData
username=bard
cpu=BERGERON
cpu=192.168.2.79:12428
```

---

**Note** On the new CPU, it is important to remove the field `cpu=` in the `polyspace.conf` file to avoid being also a “Queue Manager”.

---

### Troubleshooting Common Errors

This section contains information on troubleshooting the following common errors:

- “Errors Concerning the `polyspace.conf` File” on page 2-37



- “Errors Concerning Problems with Write Access” on page 2-38
- “Other Errors” on page 2-38

**Errors Concerning the polyspace.conf File.** If you receive any of the following errors:

- 1 Stop the polyspacedservice (daemon).
- 2 Update the polyspace.conf file.
- 3 Restart the service (daemon).

The following errors concern the polyspace.conf file.

- "Error: The data folder path should not contain white space.";
- "Error: At least one language should be supported by the CPU.";
- "<polyspace.conf>:<line\_number>: Duplicate entry for product <version value>.";
- "<polyspace.conf>:<line\_number>: Unknown language : <value>.";
- "<polyspace.conf>:<line\_number>: Duplicate entry for language <value>.";
- "<polyspace.conf>:<line\_number>: Duplicate entry for <queuemanager name>.";
- "<polyspace.conf>:<line\_number>: Duplicate entry for <value>.";
- "<polyspace.conf>:<line\_number>: Duplicate entry for username'.";
- "<polyspace.conf>:<line\_number>: Duplicate entry for 'port'.";
- "<polyspace.conf>:<line\_number>: Invalid port number : <value>";
- "<polyspace.conf>:<line\_number>: Invalid CPU name.";

- "<polyspace.conf>:<line\_number>: Duplicate entry for CPU <hostname> ";
- "<polyspace.conf>:<line\_number>: Unknown key : <value> ";
- "<polyspace.conf>:<line\_number>: Parse error.";
- "No PolySpace product found for language <value>.";
- "Warning: Invalid <lang> license for product <version> on host <hostname> ";
- "The PolySpace product <version> was not found.";

**Errors Concerning Problems with Write Access.** If you receive any of the following errors, check right accesses with username declared in the polyspace.conf file in the folder <dir>, <file name> or <path> (given in the error message).

Check also that you have not changed anything linked to “polyspaced” service (daemon) without stopping it.

- "Fatal error: Directory <dir> is not accessible.";
- "Fatal error: Could not change the owner of <path> to <username> ";
- "Fatal error: Could not open file <file name> for reading.";
- "Fatal error: Could not set <permission> permissions on <path> ";
- "Fatal error: Could not open file <file name>";

**Other Errors.** Other errors may concern OS system, network and standard command available (for example “tar”, “gzip”, etc.).

Double check that these standard commands exist in your system. Error messages are detailed enough to know which command has failed.

# Installing PolySpace Model Link Products

---

- “Installing PolySpace Model Link Products” on page 3-2
- “Upgrading MATLAB Software” on page 3-4
- “Troubleshooting PolySpace Model Link SL Installation” on page 3-5

# Installing PolySpace Model Link Products

The PolySpace Model Link SL and PolySpace Model Link TL provide automatic error detection for code generated from The MathWorks™ Simulink models.

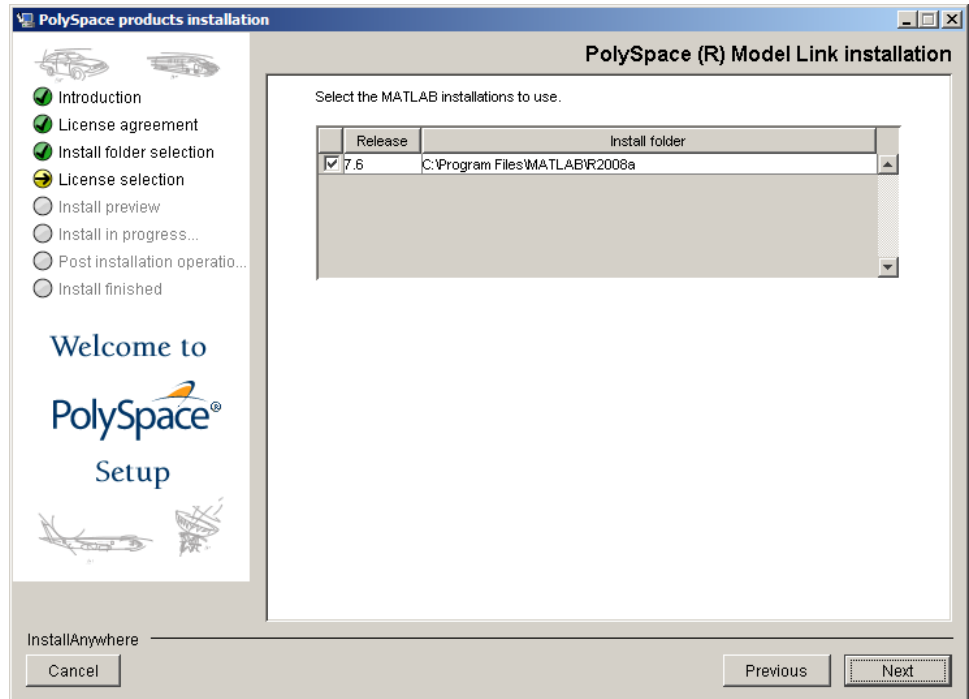
PolySpace Model Link SL installation consists of two components:

- Simulink PolySpace library with associated blocks
- “Back to model” (HTML links in the code source) extension in the PolySpace Viewer that allows direct navigation from a run-time error in the auto-generated code to the corresponding block in the Simulink model.

To install PolySpace Model Link SL:

- 1 Install the PolySpace software as described earlier in this guide.

The PolySpace Installer automatically detects that MATLAB and Simulink components are installed and displays the following window:



**2** Select the MATLAB releases to link with PolySpace.

## Upgrading MATLAB Software

If you upgrade your MATLAB release, you must re-install PolySpace Model Link SL or PolySpace Model Link TL for that release.

You can re-install PolySpace Model Link SL without using the installation DVD.

To reinstall:

- 1** Copy the file `Polyspace_Common\PolySpaceModelLink\startup\polyspacerc.m` into your new MATLAB release `matlabroot(new)\toolbox\local`.
- 2** Enter `edit matlabrc` in the MATLAB command window.
- 3** Go to the end of the file, and add the following lines:

```
%% POLYSPACE CONFIGURATION
polyspacerc;
%% END OF POLYSPACE CONFIGURATION
```

- 4** Run MATLAB in “regserver” mode, to post-install your MATLAB release on the local machine. To do this, enter the following command:

```
matlabroot(new)\bin\matlab.exe /regserver /r quit
```

Where `matlabroot(new)` is the MATLAB installation folder, for example `C:\MATLAB\R2009a`.

## Troubleshooting PolySpace Model Link SL Installation

### In this section...

“MATLAB Software Is Not Installed Locally” on page 3-5

“No Write Access to MATLAB Product Root” on page 3-6

### MATLAB Software Is Not Installed Locally

If MATLAB is not installed locally, the registry entries do not contain reference to MATLAB, which PolySpace uses to detect installation folders. In this case, the PolySpace installer will not detect MATLAB, and will skip installation of the PolySpace Model Link tools. Therefore, you must perform a manual installation.

To perform a manual installation:

- 1 Insert the PolySpace DVD in your DVD drive.
- 2 Locate the corresponding windows drive (hereafter D:\), and copy the entire folder `D:\Data\Windows\Addin\Mathworks\polyspace` into `PolySpace_Common\PolySpaceModelLink`.
- 3 Copy the file `D:\Data\Windows\Addin\Mathworks\startup\polyspacerc` into `matlabroot\toolbox\local`.
- 4 Edit `matlabroot\toolbox\local\matlabrc`, and add the following lines at the end of the file:

```
%% POLYSPACE CONFIGURATION
polyspacerc;
%% END OF POLYSPACE CONFIGURATION
```

- 5 Run MATLAB in “regserver” mode, to post-install your MATLAB release on the local machine. To do this, enter the following command:

```
matlabroot(new)\bin\matlab.exe /regserver /r quit
```

Where `matlabroot(new)` is the MATLAB installation folder, for example `C:\MATLAB\R2009a`.

### **No Write Access to MATLAB Product Root**

If the installer detects that there is no write access to *matlabroot*, it asks you if you want to add a desktop shortcut to start MATLAB and configure the PolySpace Model Link software.

- If you select **Yes**, a shortcut is added to your desktop. Double-click the shortcut to execute `matlabroot\bin\win32\matlab.exe /r polyspacerc`. This command starts MATLAB and automatically configures the PolySpace Model Link software.
- If you select **No**, the installer will describe how to manually configure PolySpace Model Link software



# Installing PolySpace UML Link RH

---

# Installing PolySpace UML Link RH Product

The PolySpace UML Link RH product provides an add-in inside the Rhapsody Model-Driven development tool. It concerns the installation of two components:

- PolySpace library
- “Back to model” extension (HTML link inside the code) in the PolySpace Viewer that allows direct navigation from a run-time error in the auto-generated code to the corresponding block in the UML model.

The PolySpace Installer automatically detects that Rhapsody components are installed and installs PolySpace UML Link RH during the “Shared components” installation.

If you install the Rhapsody software after installing PolySpace software, you can either re-install the PolySpace software or manually copy the plug-in files from the DVD to */PolySpace\_Common/PolySpaceModelLink/*.

By default, a *PolySpaceInstallCommon/PolySpaceUMLLink* is created where we can find all the components of PolySpace UML Link RH. Moreover, the PolySpace installer modifies two files associated with the Rhapsody usage:

- A line in the *rhapsody.ini* file located at the root of C:, or in C:\WINNT:  
`CopyVBA=PolySpaceInstallCommon\PolySpaceUMLLink\bin\PolySpace.vba`  
where *PolySpaceInstallCommon* represents the path to the *PolySpace\_Common* folder.
- Some lines are added to the *RhapsodyInstallDir\Share\Properties\site.prp*:

```
Subject General
Metaclass Model
Property HelpersFile String "PolySpaceInstallCommon\
PolySpaceUMLLink\etc\PolySpace.hep"
End
```

# Upgrading PolySpace Software

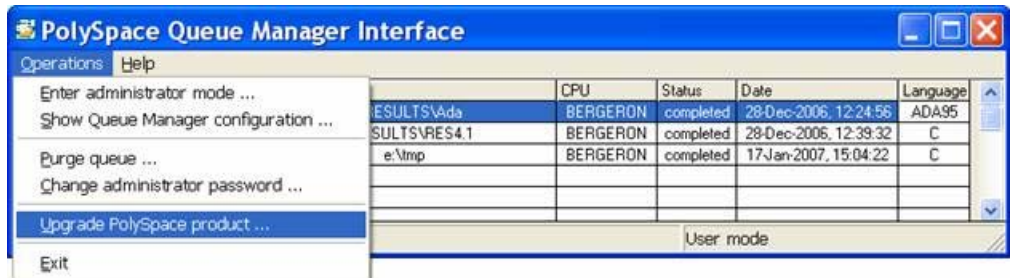
---

- “Upgrading PolySpace Client Products” on page 5-2
- “Upgrading PolySpace Server Products” on page 5-4

## Upgrading PolySpace Client Products

When the remote launcher has been installed, The Queue Manager interface (or PolySpace Spooler) is available to manage verifications sent by a PolySpace Client.

The **Menu Operations > Upgrade PolySpace Product** allows the upgrade of a PolySpace Client.



On the Server side, in the *PolySpaceInstallCommon/./PolySpace\_RLData/upgrades* folder (*/var/PolySpace/upgrades* on UNIX) a new release of a product has been installed with the following format: *<version>.tar* or *<version>.tar.gz*. If such file in the upgrades folder exists, it is possible to upgrade the PolySpace client:




---

**Note** The tar file needs to contain the setup.exe at his root.

---

After having chosen options (installation folder and silent modes), the “PolySpace Queue Manager Interface” downloads the complete setup package (approximately 600 Mb) and unpacks it. It could take several minutes to download and unpack (5 to 10), depending of network and Desktop PC performances. Then, a standard installation begins. Note that it is recommended to close all PolySpace Products, if they are open.

## Upgrading PolySpace Server Products

In this section...
“Overview” on page 5-4
“Upgrading an Active Server” on page 5-4
“Upgrading an Inactive Server” on page 5-4

### Overview

When you are upgrading the PolySpace software on a Server, you need to determine if the PolySpace Server daemon is active or not (whether a daemon is running and one or more verifications are queued and running on CPUs).

### Upgrading an Active Server

To upgrade an active server:

- Perform the Client upgrade procedure in “Upgrading PolySpace Client Products” on page 5-2.
- After the installation completes, open the PolySpace Remote Launcher Manager to configure the server. For more information, see “Configuring the PolySpace Server Software” on page 2-30

### Upgrading an Inactive Server

On an inactive server (a machine without an installed daemon or without any verifications queued and running), you can choose the PolySpace **Server** installation. The field “product=” will be filled in an automatic way. You must only add the lang= if it does not already exist.

Do not forget to update the polyspace.conf of the PolySpace Server which serves as a Queue Manager, i.e. by adding a new entry cpu=.

---

**Note** You can install different releases of a same product language. The PolySpace Server will automatically lead verifications coming from different client releases to adequate CPU and associated PolySpace release product.

---

# Installing PolySpace C++ Add-In for Visual Studio

---

## **Installing the PolySpace C++ Add-In for Visual Studio**

The PolySpace installer automatically detects that Visual Studio is installed and installs the add-in during the “Shared Components” installation.

When a PolySpace Client for C/C++ is already installed before you install Visual Studio, you must reinstall the PolySpace software from the DVD.

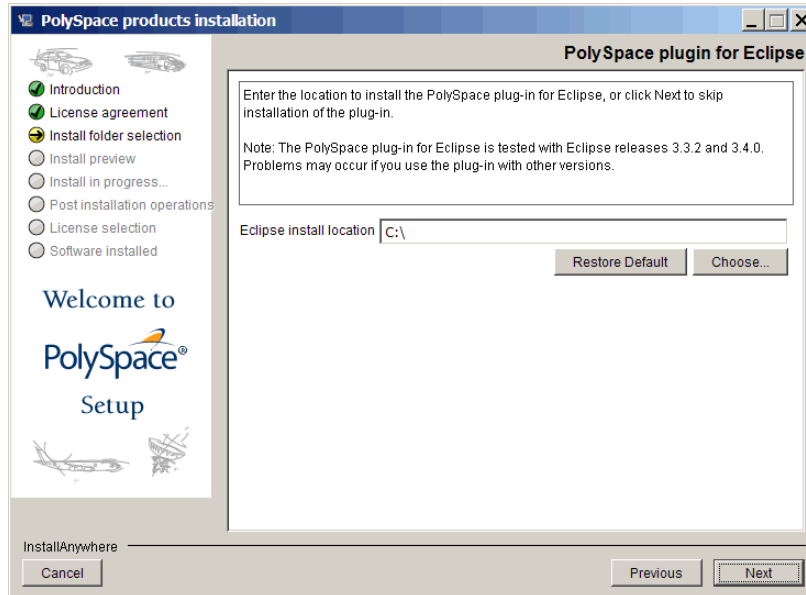


# Installing PolySpace Plug-In for Eclipse IDE

---

## Installing the PolySpace Plug-In for Eclipse IDE

During the installation process, you will see the following screen:



To install the PolySpace Plug-In for Eclipse™ IDE:

- 1 Select **Choose**, then specify the location of your Eclipse folder, for example, `C:\eclipse`.
- 2 Click **Next** to proceed with the installation process.

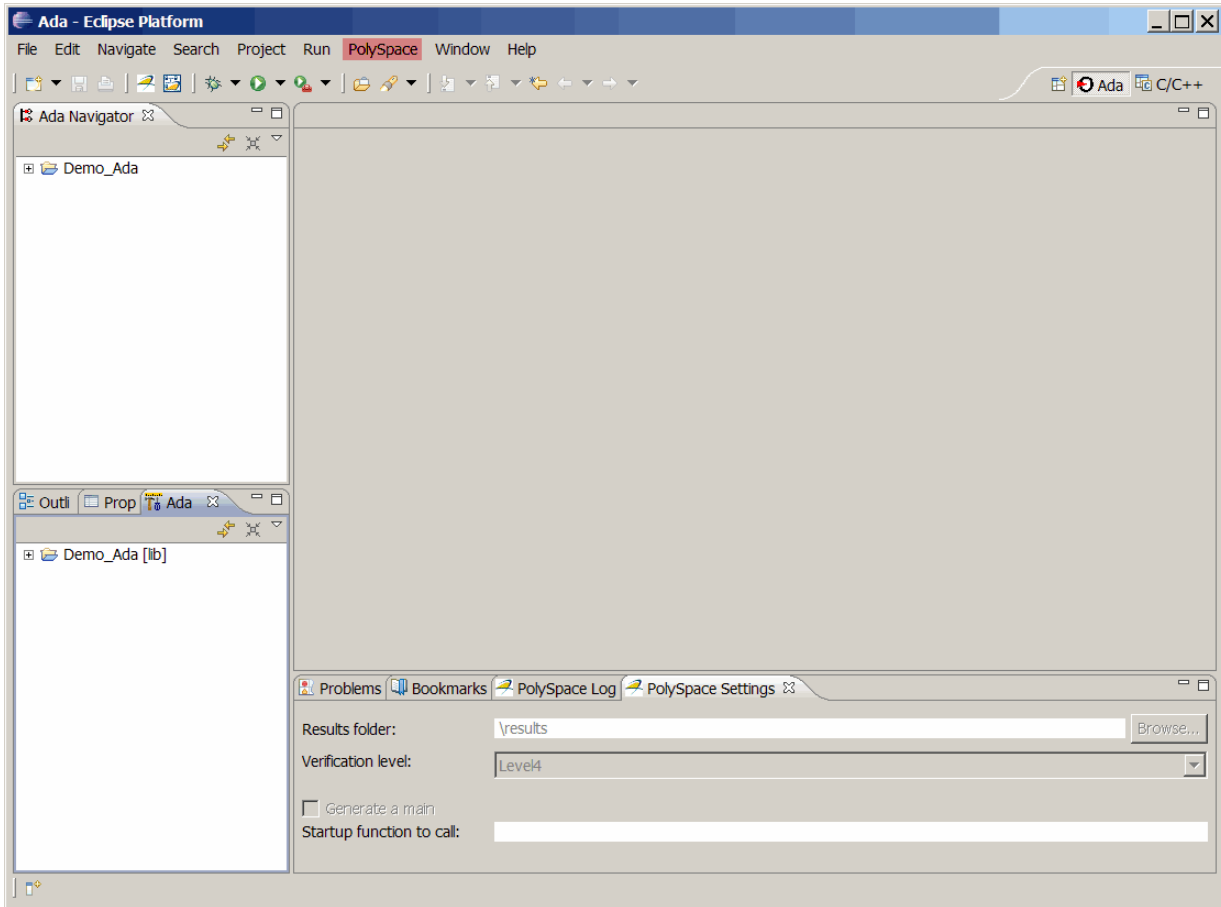
The PolySpace plug-in is installed only if you have already set up the Eclipse Integrated Development Environment (IDE). For information on installing this IDE, see the Eclipse documentation at [www.eclipse.org](http://www.eclipse.org).

---

**Note** If you installed PolySpace software before the Eclipse IDE, you must re-install the PolySpace software.

---

When the installation process is complete, the menu bar of the Eclipse editor has the PolySpace menu:





# Uninstalling PolySpace Products

---

- “Uninstalling on Windows Platforms” on page 8-2
- “Uninstalling on Linux or UNIX Platforms” on page 8-4

## Uninstalling on Windows Platforms

### In this section...

“Should I Uninstall Previous Releases Before Installing?” on page 8-2

“Uninstalling the PolySpace Software” on page 8-2

“Uninstalling Shared Components” on page 8-3

### Should I Uninstall Previous Releases Before Installing?

If you are upgrading your existing PolySpace software to the latest release, you may need to uninstall the existing software before installing the new release.

- If you are currently running release R2008a or later, **do not** uninstall the previous release before installing the current release. The new server software can run verifications launched from both releases. Before installing the new release, however, you need to stop the PolySpace service. You can run the command: `%POLYSPACE_COMMON%\RemoteLauncher\PSTRLManager.exe` to check if the service is running and stop it if necessary. After installing, you can restart the service using the same command.
- If you are currently running release R2007a+ or earlier, **you must uninstall** the previous release before installing the current release. R2007a+ and earlier releases used the Cygwin API, which is incompatible with the current release.

### Uninstalling the PolySpace Software

You can uninstall the PolySpace software through the standard interface available on a Windows PC.

To uninstall the PolySpace software:

- 1 From the Windows desktop, select *Start > Settings > Control Panel > Add or Remove Programs*.
- 2 Select the PolySpace product you want to uninstall.

### **3** Select **Change/Remove**.

The uninstallation procedure goes through steps. Please follow the instructions and refer to paragraphs below for specifics components, if necessary.

---

**Note** Some files and folders added after installation can remain after the uninstall process is complete. After reboot, check the *PolySpaceInstallDir* and *PolySpaceInstallCommon* folders for remaining files and subfolders. You can remove these files by hand.

---

## **Uninstalling Shared Components**

You can also uninstall specific shared components.

To uninstall PolySpace shared components:

- 1** From the Windows desktop, select *Start > Settings > Control Panel > Add or Remove Programs*.
- 2** Select **PolySpace Shared Components**.
- 3** Select **Change/Remove**.

The shared components are removed.

## Uninstalling on Linux or UNIX Platforms

### In this section...

“Should I Uninstall Previous Releases Before Installing?” on page 8-4

“Uninstalling the PolySpace Software” on page 8-4

“Uninstalling Shared Components” on page 8-4

### Should I Uninstall Previous Releases Before Installing?

If you are upgrading your existing PolySpace software to the latest release, you **do not** need to uninstall the existing software before installing the new release. The new server software can run verifications launched from both releases.

Before installing the new release, you must stop the polyspaced daemon. Using an administrator login, you can run the command `/etc/init.d/polyspaced stop` to stop the daemon. After installing, you can restart the service using the command `/etc/init.d/polyspaced start`.

### Uninstalling the PolySpace Software

To uninstall components under Linux or UNIX system:

- Enter `PolySpaceInstallDir/Uninstall/Uninstall .`  
This script launches the graphical uninstall wizard.

### Uninstalling Shared Components

You can also uninstall specific shared components.

To uninstall PolySpace shared components:

- 1 Enter `PolySpaceInstallCommon/Uninstall/Uninstall`

The shared components are uninstalled.



# PolySpace License Installation

---

- “PolySpace License Overview” on page 9-2
- “Common Licensing Questions” on page 9-8
- “Configuring Designated Computer Licenses” on page 9-10
- “Configuring Concurrent Licenses” on page 9-12
- “Checking Installed Licenses ” on page 9-29
- “License Error Messages” on page 9-30

## PolySpace License Overview

In this section...
“Overview” on page 9-2
“PolySpace Licensing Options” on page 9-2
“Obtaining a License File” on page 9-5

### Overview

This chapter describes PolySpace licensing for administrators and users of PolySpace products. It describes:

- Types of licensing available
- How to configure your license
- FLEXnet server installation
- How to use PolySpace products with FLEXnet licenses

### PolySpace Licensing Options

There are two licensing options:

- “Designated Computer (Individual) Licenses” on page 9-2
- “Concurrent (Floating) Licenses” on page 9-4

### Designated Computer (Individual) Licenses

Designated Computer (DC) licenses are used only for PolySpace client software. DC licenses are appropriate for end users who want to install, operate, and administer the client software themselves. A DC license authorizes you to use your PolySpace client software on any one computer system to which you have access. If you are running PolySpace on your work computer, a DC license does not authorize you to run the software on your home system as well. The system you choose can be a Microsoft Windows or UNIX computer.

With a DC license, you are the system administrator. In this role, you are responsible for:

- Installing and activating the PolySpace client software on your computer.
- Ensuring that you are the only person who runs the software on your computer.

To generate a DC license, you need to activate your software using either the PolySpace Software Activation Client, or the License Center at the MathWorks web site. To obtain a DC license, refer to “Checking Installed Licenses ” on page 9-29.

---

**Note** DC licenses do not use the FLEXnet server. For DC licences, you need only to activate your software.

---

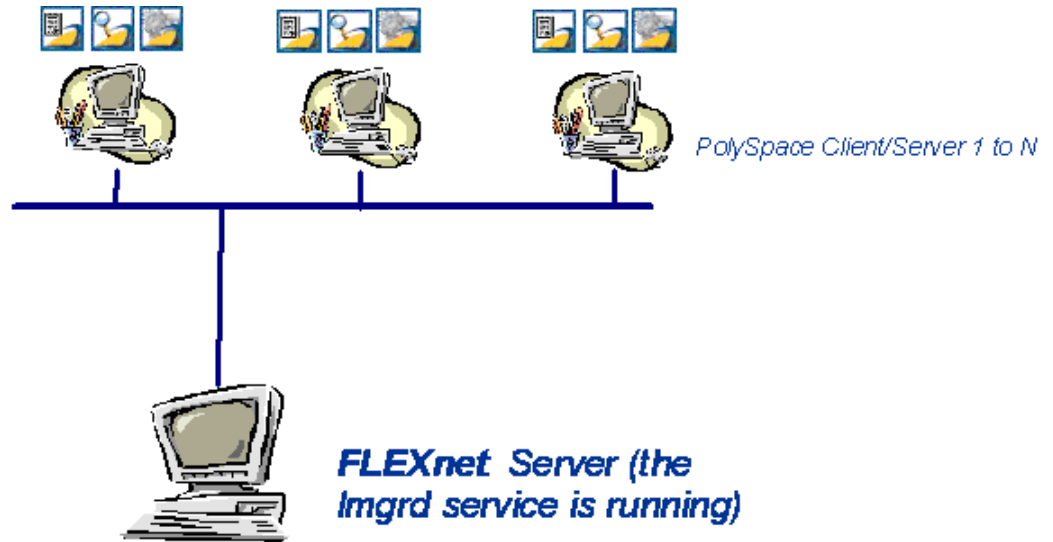
## Concurrent (Floating) Licenses

Concurrent licenses are used for both PolySpace client and PolySpace server software. Concurrent licenses are appropriate for organizations that have standardized on the FLEXnet license manager, or who want to impose limits on software use for accounting or license management purposes.

Concurrent licenses use license keys to control access. Users check out a license key when they launch a PolySpace product. When all the keys for a particular product are checked out, the license manager denies further requests.

A Network Named User (NNU) configuration is an option for concurrent licensing that may be set up as a protective measure to restrict the usage of shared licenses.

The system administrator for Concurrent licenses must set up an installation that optimizes accessibility to the products. Concurrent licenses allow you to install the software only in a Network Concurrent User installation type.



**PolySpace® FLEXnet® Server Architecture**

The previous figure shows how to use PolySpace products with a FLEXnet license manager:

- PolySpace products are used by any number of users. The PolySpace products can include both Client and Server products.
- Each PolySpace product requests licenses from the FLEXnet server.
- The FLEXnet server can be installed on the same machine as a PolySpace product, as long as it is running a mutually supported operating system (see “Supported Machines and Versions” on page 9-16).

---

**Note** With concurrent licenses, you do not need to activate the software on each PolySpace system. You manually activate the concurrent license once (using the License Center at the MathWorks web site), and then provide license files for each PolySpace system.

---

## Obtaining a License File

When you activate your software through The MathWorks Activation Client, you automatically receive a license file. You do not need to take any additional steps.

If you are using a concurrent license, or do not have access to the Activation Client, you must obtain a license file from The Mathworks. You can obtain license files from the License Center at the MathWorks Web site:  
<http://www.mathworks.com/licensecenter>

To obtain a concurrent license file, you need either the MAC address or Serial disk number of your computer. You will provide this number to The MathWorks to obtain the license file.

## Getting the License hostid on UNIX Platforms

On a UNIX machine, the hostid corresponds to the MAC address of the machine where the FLEXnet server is running (using a concurrent license) or where the DC license is used.

You can display the hostid of a UNIX machine using the `lmutil` FLEXnet utility available on the PolySpace DVD at `DVD/Data/Unix/FLEXLM/x86-linux`

for a Linux system or at *DVD/Data/Unix/FLEXLM/sparc-solaris* for a Solaris system.

Use the following command:

```
./lmutil lmhostid
```

The result on a shell window looks like the following:

```
lmutil - Copyright (c) 1989-2007 by Macrovision Corporation.  
All rights reserved.
```

```
The FLEXlm host ID of this machine is "831da5d6"
```

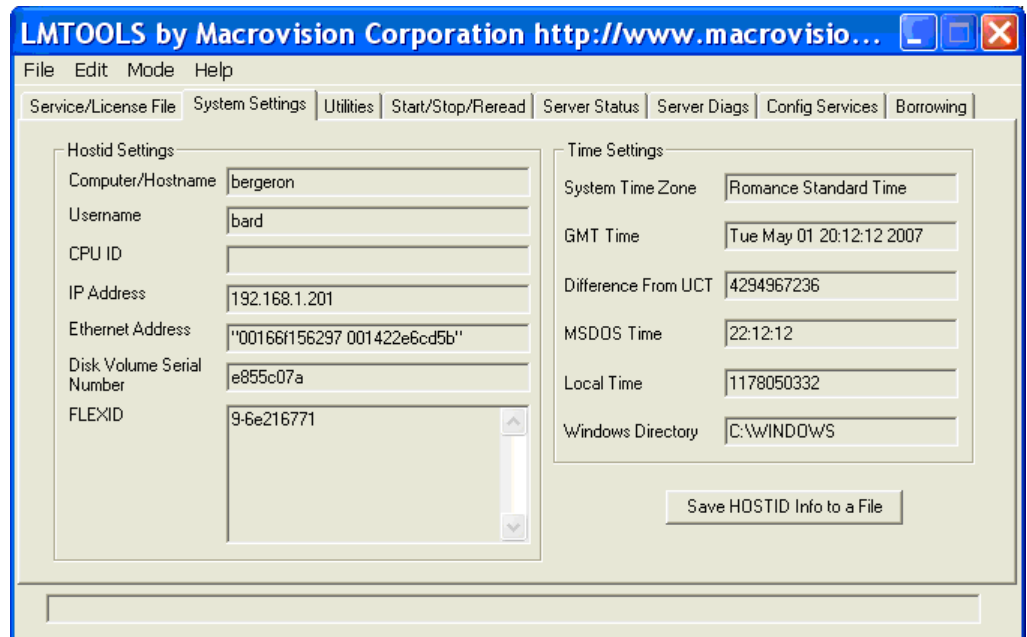
Transmit the number between double quotes to The MathWorks in order to obtain the license file.

### **Getting the License hostid on Windows Platforms**

On a Windows machine, *hostid* or *machine\_hostid* corresponds to the Serial disk number of the machine where the FLEXnet server is running (using a concurrent license) or where the DC license is used.

You can display the hostid of a Windows machine using the *lmtools.exe* FLEXnet utility available on the PolySpace DVD at *DVD\Data\Windows\FLEXLM\x86-win32*.

The **Disk volume serial number** needs to be checked in the System Settings tab of *lmtools.exe* on Windows.



### Disk Volume Serial Number Accessible from LMTOOLS

It can also be obtained using the following command prompt:

```
lmutil.exe lmhostid -vsn
```

The result on a Command Prompt window looks like the following:

```
lmutil - Copyright (c) 1989-2007 by Macrovision Corporation.  
All rights reserved
```

```
The FLEXlm host ID of this machine is "DISK_SERIAL_NUM=e855c07a"
```

Transmit the number between double quotes to The MathWorks in order to obtain the license file.

## Common Licensing Questions

### In this section...

“Do I need a FLEXnet Server to Use an Individual License?” on page 9-8

“How Do I Identify Designated Computer and Concurrent Licenses?” on page 9-8

“What If I Have Other MathWorks Products Installed?” on page 9-8

“What If I Have an Old PolySpace FLEXnet License Server?” on page 9-9

### Do I need a FLEXnet Server to Use an Individual License?

Designated Computer (individual) licenses **do not** use the FLEXnet server. For DC licences, you need only activate your software license.

For more information, see “Configuring Designated Computer Licenses” on page 9-10.

### How Do I Identify Designated Computer and Concurrent Licenses?

DC license files have the word *uncounted* in the license line. This line is used directly in the license file. See the example in “DC License File Format” on page 9-11.

### What If I Have Other MathWorks Products Installed?

PolySpace products use the same license mechanism as other MathWorks products.

If you receive a Designated Computer license for PolySpace products, refer to “Configuring Designated Computer Licenses” on page 9-10.

If you receive a Concurrent License and you already use a FLEXnet Server for other MathWorks products, you must add all concurrent INCREMENT lines in the PolySpace license to the FLEXnet Server, and reread it.



Then, refer to “Configuring Licenses on a PolySpace Client or PolySpace Server System” on page 9-25.

## **What If I Have an Old PolySpace FLEXnet License Server?**

To use PolySpace products release R2007a+ or later, you must upgrade the FLEXnet Server to the version available on the PolySpace product DVD. The upgrade process involves uninstalling your old FLEXnet server and installing the new one.

For installation information, see “Installing FLEXnet Manager” on page 9-17.

Then, refer to “Configuring Concurrent Licenses” on page 9-12 for licensing information.

## Configuring Designated Computer Licenses

In this section...
“Overview” on page 9-10
“Installing License Files” on page 9-10
“DC License File Format” on page 9-11

### Overview

This section describes how to install a Designated Computer (individual) license for PolySpace products, using a `license.dat` file. It also describes how to check license usage.

Designated Computer licenses are available only for PolySpace client software

---

**Note** When you activate your software through The MathWorks Activation Client, your license is configured automatically. You do not need to take any additional steps.

---

### Installing License Files

To install a DC licence, you copy the `license.dat` file to the appropriate path. The same `license.dat` file must be used for all PolySpace products and must be set up with the standard PolySpace subfolder localization (see format in “DC License File Format” on page 9-11).

Place the license file in the `PolySpaceInstallCommon/licenses` folder. If you installed the PolySpace software in the default folder, place the file in the following location:

- `/PolySpace/PolySpace_Common/licenses/license.dat` on a UNIX platform.
- `\PolySpace\PolySpace_Common\licenses\license.dat` on a Windows platform.

---

**Caution** Remove any previous `license.dat` file from the `/licenses` folder.

---

## DC License File Format

This kind of license is used for an individual user and computer. It *does not* require a FLEXnet license manager to be running. It has the following format:

```
INCREMENT PolySpace_Feature MLM passcode_version_number  
date_of_license_end uncounted key HOSTID=machine_hostid  
SN=serial_number
```

*machine\_hostid* – This is the hostid of the machine, usually the Mac address on UNIX system and the disk serial number on Windows (see Getting the License hostid). The *machine\_hostid* must be given to obtain a license file.

### Example

```
# MATLAB license passcode file.  
# License No: 517786  
INCREMENT PolySpace_Client_C_CPP MLM 19 3-jan-2008 uncounted \  
ABCDEF12345678A HOSTID=DISK_SERIAL_NUM=388ab914 SN=517786 TS_OK
```

## Configuring Concurrent Licenses

In this section...
“Introduction to FLEXnet Licensing” on page 9-12
“Installing FLEXnet Manager” on page 9-17
“Configuring a Concurrent License” on page 9-24
“Installing Licenses on an Existing FLEXnet Server” on page 9-28

### Introduction to FLEXnet Licensing

- “What is FLEXnet Manager?” on page 9-12
- “FLEXnet Software Components” on page 9-13
- “Supported Machines and Versions” on page 9-16

### What is FLEXnet Manager?

A Concurrent license requires FLEXnet Manager. Macrovision® FLEXnet Manager is a network license manager used to control the use of the PolySpace software products.

FLEXnet Manager is the most popular license manager in the software industry. FLEXnet Manager allows software licenses to be available anywhere on a network, instead of being tied to specific machines. Floating licensing benefits both users and license administrators. Users make more efficient use of fewer licenses by sharing them on the network. License managers control the users and machines that have access to the software managed by FLEXnet Manager.

---

**Note** FLEXnet Manager is not automatically installed as part of the PolySpace software installation. Refer to “Installing FLEXnet Manager” on page 9-17 for information about installing the FLEXnet software.

---

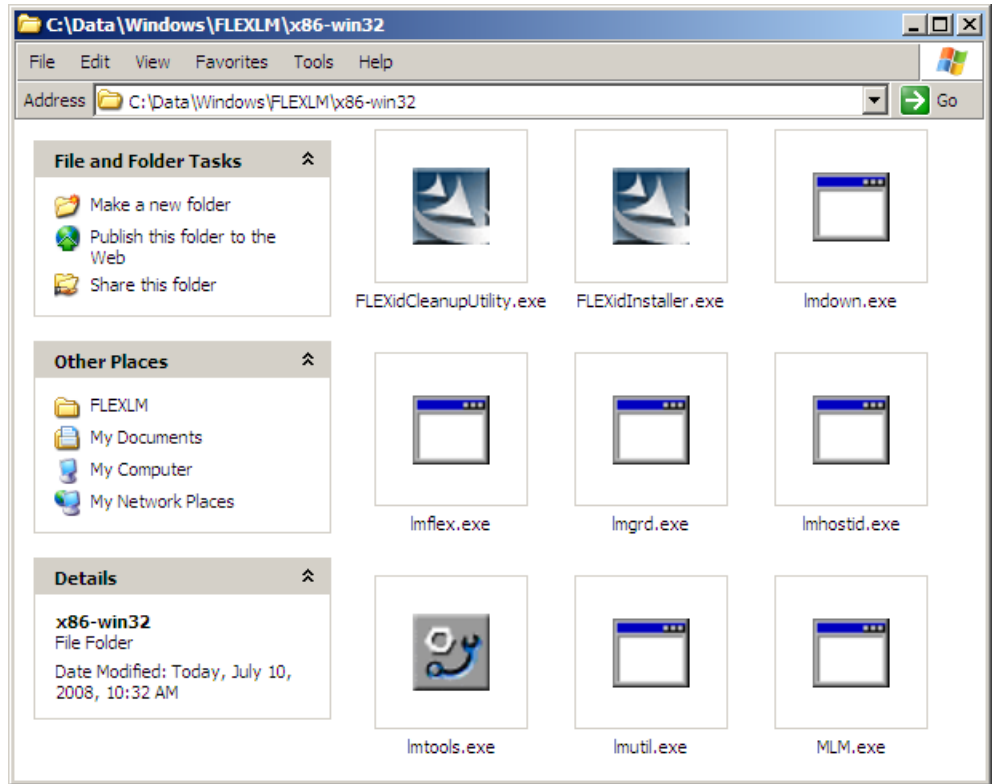
## **FLEXnet Software Components**

- “Windows Platforms” on page 9-14
- “Linux or Solaris Platforms” on page 9-16

**Windows Platforms.** On a Windows system, the following software components relate to the standard FLEXnet package (see FLEXnet® Components on page 9-15).

<b>FLEXnet Component</b>	<b>Description</b>
license.dat	License file. If you do not have a license, contact The MathWorks.
lmtools.exe	Allows you to manage the license.
MLM.exe	Vendor service that keeps track of the number of licenses checked out, and where they are.
lmgrd.exe	License service that handles the initial contact with PolySpace products, passing the connection on to MLM.exe. This service also starts and restarts MLM.exe.
lmutil.exe	Allows you to perform license server management and administration, for example, displaying the MAC address, IP address, disk serial number, and user name. Can be used from the command line.

The following figure shows the FLEXnet components available on the DVD in `DVD\Data\Windows\FLEXLM\x86-win32`.



## FLEXnet® Components

**Linux or Solaris Platforms.** On a Linux or Solaris system, the following software components relate to the standard FLEXnet package.

FLEXnet Component	Description
MLM	Vendor service that keeps track of the number of licenses checked out, and where they are.
lmgrd	License daemon that handles the initial contact with PolySpace products, passing the connection on to MLM.exe. This service also starts and restarts MLM.exe.
lmutil	Allows you to manage the license server, for example, displaying the MAC address, IP address, disk serial number, and user name.

---

**Note** Installing these components consists of copying them from the DVD: *DVD/Data/Unix/FLEXLM/x86-linux* and *DVD/Data/Unix/FLEXLM/sparc-solaris*.

---

### Supported Machines and Versions

- “Supported FLEXnet Releases” on page 9-16
- “Supported Machines” on page 9-17
- “Network Recommendations for Concurrent Licensing” on page 9-17

**Supported FLEXnet Releases.** PolySpace products support FLEXnet release 10.8.



**Supported Machines.** You can install the FLEXnet server on all platforms supported by PolySpace products, as well as Windows Server 2003 (which is not supported by PolySpace products). The following table summarizes license protections, FLEXnet server support, and PolySpace product support for available operating systems:

Protection	Windows			Linux <sup>2</sup>		Solaris	
Version	2000	XP	2003	3.0	4.0	8.0	10.0
<b>FLEXnet Manager release 10.8</b>							
Hostid <sup>3</sup>	OK	OK	OK	OK	OK	OK	OK
<b>PolySpace Products release 2007a+</b>							
Hostid	OK	OK	NO	OK	OK	OK	OK

**Network Recommendations for Concurrent Licensing.** You must have a good network configuration for the FLEXnet client to obtain good performance for your PolySpace verifications.

If the client machine knows the FLEXnet server in its hosts file, PolySpace verifications run quickly. However, if the client machine does not know the FLEXnet server (ping *server\_name* does not work), the PolySpace verification takes more than twice the time.

## Installing FLEXnet Manager

- “Installing FLEXnet Manager on Windows Systems” on page 9-17
- “Installing FLEXnet Manager on UNIX Systems” on page 9-22

### Installing FLEXnet Manager on Windows Systems

- “Software Location” on page 9-18
- “Installing the FLEXnet Server” on page 9-18

2. RedHat Enterprise Linux Workstation

3. Hostid can be a Mac address or serial disk number (see “Getting the License hostid”)

- “Configuring the License Manager” on page 9-18

---

**Note** FLEXnet Manager is not installed as part of the PolySpace software installation.

---

**Software Location.** The FLEXnet software components are located on the PolySpace Products DVD in:

*DVD\Data\Windows\FLEXLM\x86-win32.*

---

**Note** The current documentation is located in *DVD/Docs/Manuals*.

---

**Installing the FLEXnet Server.** Installation consists of a copy and paste:

- 1 Copy the *DVD\Data\Windows\FLEXLM\x86-win32* folder on the machine. A permanent folder must be chosen on this machine.
- 2 Copy the license file (*license.lic*) to the chosen folder.

The previous picture (see FLEXnet® Components on page 9-15) shows an example of a copy of the FLEXnet server in a chosen folder.

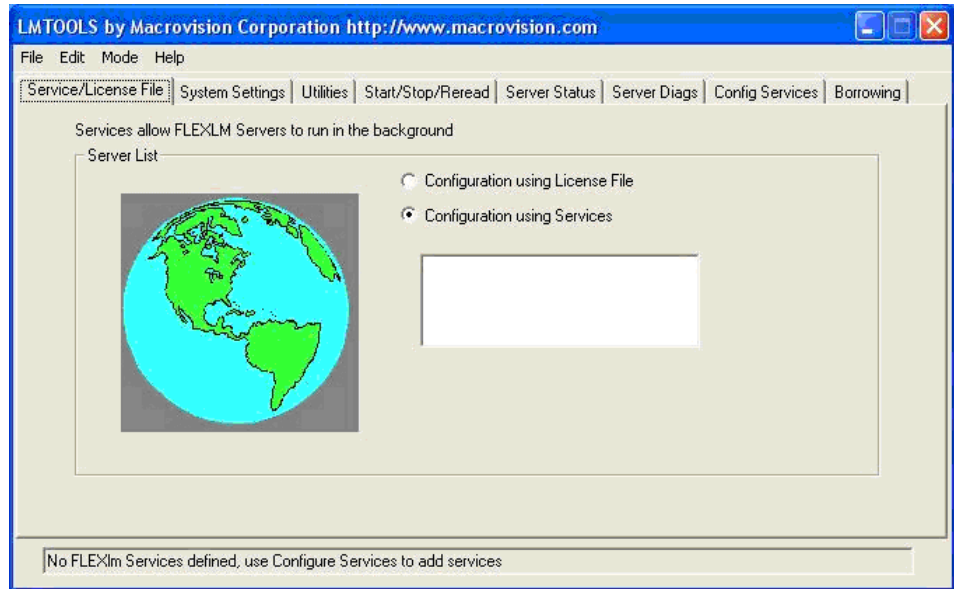
**Configuring the License Manager.** Before setting up the FLEXnet server, you must update the *license.dat* file with the name of the server, or its IP address. For more information, see “Configuring a Concurrent License” on page 9-24

You must have Administrator privileges to configure a license server as a service.

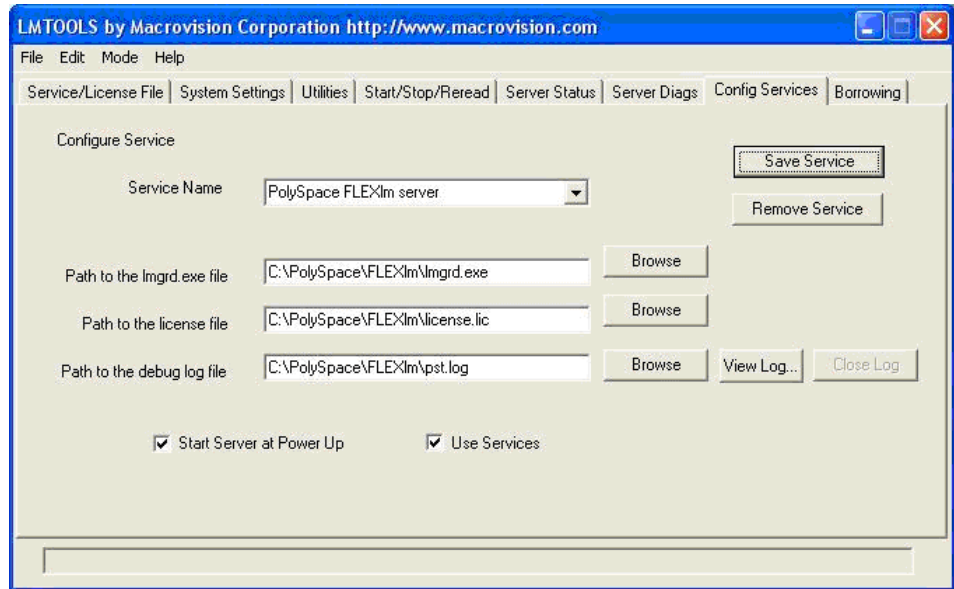
To configure the license server as a service:

- 1 Run *lmtools.exe*.

The LMTOOLS dialog box appears.



- 2** Select the **Configuration using Services** radio button.
- 3** Select the **Config Services** tab.



- 4** In the **Service Name** field, type the name of the service that you want to define, for example, PolySpace FLEXlm Server.
- 5** In the **Path to the lmgrd.exe file** field, enter or browse to lmgrd.exe for the license Server.
- 6** In the **Path to the license file** field, enter or browse to the license file for the license Server. It relates to the license.lic file. The license file is provided when you buy a PolySpace product.

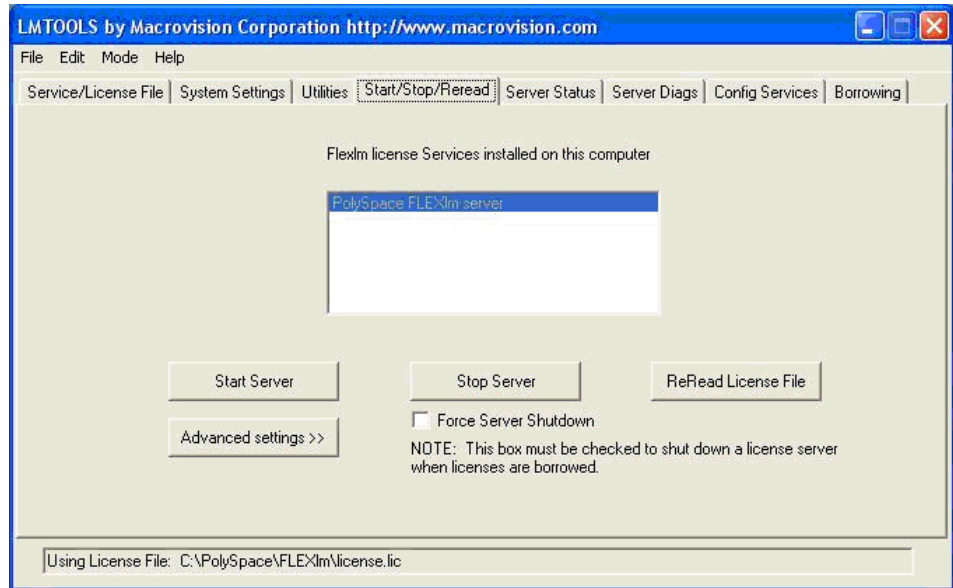
---

**Note** The server name or IP address must be updated in the license file (see “Configuring a Concurrent License” on page 9-24).

---

- 7** In the **Path to the debug log file** field, enter or browse to the debug log file that this license server writes. Before, you have created it in the permanent chosen folder.
- 8** Select the two radio button **Use Services** and **Start server at power up**.

- 9 Click **Save Service** to save the new “PolySpace FLEXlm Server” service.
- 10 Select the Start/Stop/Reread tab.



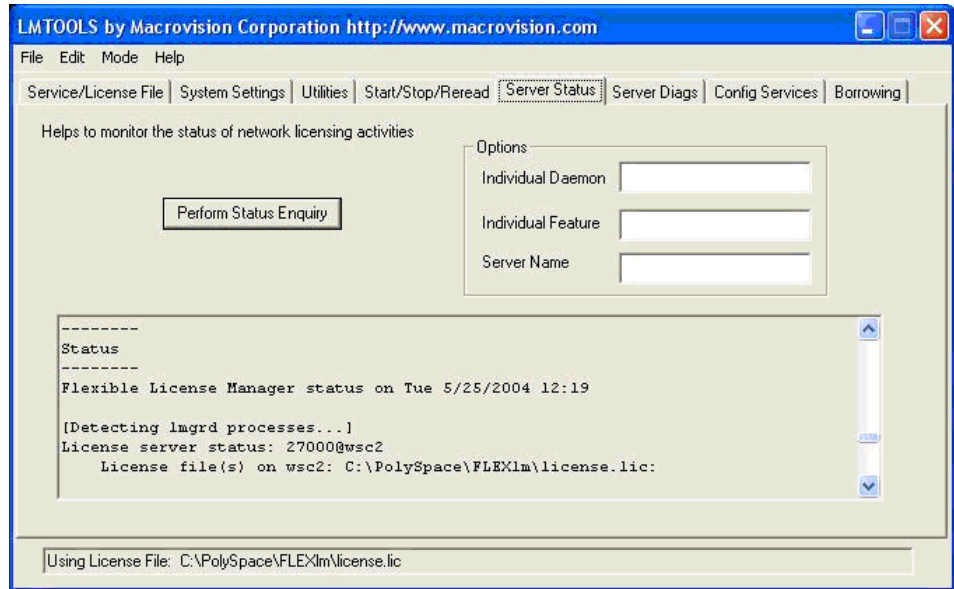
- 11 Click **Start Server** to Start the FLEXlm Server .

---

**Note** Any modification to `license.lic` requires the server to reread the license file; this is accomplished by using the “ReRead license file” button.

---

- 12 Select the **Server Status** tab.



- 13** Click the **Perform Status Enquiry** button to verify the status of the server.

On the output window, a message gives the status of the Server and of the license file (see format in “Concurrent License File Format” on page 9-26).

### Installing FLEXnet Manager on UNIX Systems

- “Software Location” on page 9-22
- “Installing the FLEXnet Server” on page 9-23
- “Configuring the FLEXnet Server” on page 9-23

---

**Note** FLEXnet Manager is not installed as part of the PolySpace software installation.

---

**Software Location.** The FLEXnet software components are located on the PolySpace Products DVD in:

*DVD/Data/Unix/FLEXLM.*

This folder contains sub-folders *x86-linux*, and *sparc-solaris*:

- *x86-linux* — concerns all Linux OS supported by PolySpace software.
- *sparc-solaris* — concerns Solaris OS supported by PolySpace software.

---

**Note** The current documentation is located in *DVD/Docs/Manuals*.

---

**Installing the FLEXnet Server.** Installation consists of a copy and paste:

- 1 The first step: copy the *DVD/Data/Unix/FLEXLM/UNIX* folder on the server (*UNIX* could be *x86-linux* or *sparc-solaris*). A permanent folder must be chosen on this machine.
- 2 Then copy the license file *license.dat* in the chosen folder.

**Configuring the FLEXnet Server.** Before setting up the FLEXnet server, you must update the *license.dat* file with the name of the server, or its IP address. For more information, see “Configuring a Concurrent License” on page 9-24.

To configure the license server on a UNIX system:

- Start the FLEXnet daemon server:

```
FLEXnetPath/lmgrd -c license_lic_path -l filename.log &
```

where *license\_lic\_path* is the absolute location of the file *license.dat* file. It is recommended that you launch the server with the option `l filename.log`. This permits you to have a log file where all accesses and exchanges are recorded to the a file named *filename.log*.

For example, with all commands and the *license.dat* file located in */usr/local/PolySpace/FLEXnet*:

```
/usr/local/PolySpace/FLEXnet/lmgrd -c  
/usr/local/PolySpace/FLEXnet/license.dat -l  
/usr/local/PolySpace/FLEXnet/FLEXnet.log &
```

---

**Note** `./lmgrd -h` gives more information about all available options of the program. Also, FLEXnet `.log` file gives a state of the FLEXnet server.

---

---

**Note** `./lmutil -h` gives more information about all available options of the `lmutil` program.

---

## Configuring a Concurrent License

- “Overview” on page 9-24
- “Configuring Licenses on a PolySpace Client or PolySpace Server System” on page 9-25
- “Configuring Licenses on the FLEXnet Server System” on page 9-26
- “Concurrent License File Format” on page 9-26

### Overview

A Concurrent license requires a FLEXnet server. Before configuring a concurrent license, you must install the FLEXnet Server from the PolySpace DVD. Refer to “Installing FLEXnet Manager” on page 9-17 for information about installing the FLEXnet Server.

To obtain a concurrent license, you must provide the MAC address of the machine where you will install the FLEXnet server manager. For more information, see “Obtaining a License File” on page 9-5.

For example, if you provide the following information:

- **MAC address** – 00123456abc1
- **Hostname** – MyFlexServer

You will receive a license file that looks like the following:

```
BEGIN-----cut here-----CUT HERE-----BEGIN
# MATLAB license passcode file.
```



```
# LicenseNo: 517786 HostID: 00123456abc1
INCREMENT PolySpace_Server_C_CPP MLM 19 01-jan-0000 2 \
  A1B2C3D4E891011AB HOSTID=ID=517786 SN=517786
INCREMENT PolySpace_Client_C_CPP MLM 19 01-jan-0000 1 \
  A1B2C3D4E891011AB HOSTID=ID=517786 SN=517786
# END-----cut here-----CUT HERE-----END
```

This license file contains a line for a concurrent PolySpace Server for C/C++ license, and a line for a PolySpace Client for C/C++ license.

Depending on whether you plan to use the license on the PolySpace client system, the PolySpace server system, or on the machine where you installed the FLEXnet manager, you must make some modifications to the file.

### Configuring Licenses on a PolySpace Client or PolySpace Server System

Since the license mechanism is compatible with the environment variables `LM_LICENSE_FILE` and `MLM_LICENSE_FILE` on either a client or server system, you have two options:

- Set the environment variable `LM_LICENSE_FILE` using the command:

```
set LM_LICENSE_FILE=27000@MyFlexServer
```

where 27000 is the port on which to reach the FLEXnet server on the host MyFlexServer.

- Create a `license.dat` file containing the following two lines:

```
SERVER MyFlexServer 00123456abc1 27000
USE_SERVER
```

Then, place the `license.dat` file in  
`C:\PolySpace\PolySpace_Common\licenses`

---

**Note** If you do not specify a port number, the default value is 27000.

---

## Configuring Licenses on the FLEXnet Server System

After copying the FLEXnet tools to a folder on the dedicated MyFlexServer host, you must update the license file by adding the following lines at the top of the license.dat file:

```
SERVER MyFlexServer 00123456abc1
VENDOR MLM
INCREMENT PolySpace_Server_C_CPP MLM 19 01-jan-0000 2 \
    A1B2C3D4E891011AB HOSTID=ID=517786 SN=517786
INCREMENT PolySpace_Client_C_CPP MLM 19 01-jan-0000 1 \
    A1BCD3EF12311078A HOSTID=ID=517786 SN=517786
```

The license file is now fully compatible with a standard FLEXnet mechanism. For more information, refer to the *FLEXnet Licensing End User's Guide*, available at: [http://www.globes.com/support/utilities/flexnet\\_licensing\\_end\\_user\\_guide.pdf](http://www.globes.com/support/utilities/flexnet_licensing_end_user_guide.pdf).

This procedure also applies if you want to add the features of the license file to an existing FLEXnet server.

---

**Note** FLEXnet server can be installed on a PolySpace Client machine, a PolySpace Server machine or any machine on the same network.

---

## Concurrent License File Format

This license file requires a FLEXnet license manager running. It has the following format:

```
SERVER server_name server_hostid
VENDOR MLM
INCREMENT PolySpace_Feature MLM passcode version_number
date_of_license_end number_of_licenses key
HOSTID=internal_number DUP_GROUP=UH SN=a_serial_number
```

- *server\_name* — name of the FLEXnet server or IP address.

---

**Note** This is the only value that can be edited (with an ASCII editor) by the administrator when the location of the FLEXnet server changes. This file can be edited and *server\_name* changed before setting up the FLEXnet server (see “Configuring the License Manager” on page 9-18 for Windows systems, or “Configuring the FLEXnet Server” on page 9-23 for UNIX systems).

---

- *server\_hostid* — This is the *hostid* of the server, usually the Mac address on UNIX system and the disk serial number on Windows (see Getting the License *hostid*). The *server\_hostid* must be given to obtain a license file.
- MLM: Vendor daemon for PolySpace products licensing.
- *PolySpace\_Feature* — type of license.

PolySpace Feature	License Type
PolySpace_Client_C_CPP	PolySpace Client for C/C++ (including Viewer, MISRA®, DRS, Main generator and Report features).
PolySpace_Client_Ada	PolySpace Client for Ada (including Viewer and Report features).
PolySpace_Server_C_CPP	PolySpace Server for C/C++ (including Remote Launcher, MISRA, DRS and Report features).
PolySpace_Server_Ada	PolySpace Server for Ada (including Remote Launcher and Report features).
PolySpace_Model_Link_SL	PolySpace Model Link SL (including Viewer, MISRA, DRS and Report features).
PolySpace_Model_Link_TL	PolySpace Model Link TL (including Viewer, MISRA, DRS and Report features).
PolySpace_UML_Link_RH	PolySpace UML Link RH (including Viewer and Report features).

- *passcode\_version\_number* and *date\_of\_license\_end* — available maintenance (and end dates).
- *number\_of\_licenses* — number of available licenses for a given type.

### Example:

```
# MATLAB license passcode file.
# LicenseNo: 517786 HostID: 00123456abc1
SERVER dev13 831da5d6
VENDOR MLM
INCREMENT PolySpace_Client_C_CPP MLM 17 3-jan-2008 20 DF1FB89EB243
  HOSTID=ID=12345 DUP_GROUP=UH SN=12345
INCREMENT PolySpace_Server_C_CPP MLM 17 3-jan-2008 20 9BFB0453E70F
  HOSTID=ID=1234E DUP_GROUP=UH SN=1234E
INCREMENT PolySpace_Model_Link_SL MLM 17 3-jan-2008 20 B639E1D6739A
  HOSTID=ID=324AF DUP_GROUP=UH SN=324AF
```

## Installing Licenses on an Existing FLEXnet Server

If you are already using a FLEXnet license manager, refer to the FLEXnet Manager user manual for information on how to add licenses for your PolySpace software. You can access the FLEXnet user manual directly from the Macrovision web site (<http://www.macrovision.com>).

---

**Note** The `lmgrd` or `lmgrd.exe` service, `lmutils` and `lmtools` must have the correct version number. PolySpace products support FLEXnet Version 10.8.

---

## Checking Installed Licenses

You can check which PolySpace licenses are installed on your system using the `-check-license` command. PolySpace product usage is standard.

To check your licenses, enter the command:

```
polyspace[-desktop]-[c|ada|cpp|ada95]-check-license
```

The results appear in the PolySpace log file:

```
<polyspace-c-check-license 2008b PID460 PGID2616>  
<polyspace-viewer V4.2.2.12>
```

Options used with Verifier:

```
-prog=polyspace  
-polyspace-version=4_2_1_6
```

```
-lang=C  
-no-exec=true
```

```
Verifying host configuration ...
```

```
*** Configuration of the host : OK  
Checking license ...  
license is OK
```

On a Windows machine, the same command is available:

```
PolySpaceInstallDir\wbin\polyspace[-desktop]-[c|cpp|ada95]-check-license.exe
```

## License Error Messages

### In this section...

“Overview” on page 9-30

“Error -15, the FLEXnet server is unreachable” on page 9-30

“Error -5, the PolySpace feature is not available” on page 9-31

“Error -21, the maintenance date has expired” on page 9-31

“Error -10, the license date has expired” on page 9-31

### Overview

Most of the error messages are displayed in the log file after a license check.

However, since licensing is checked during code verification, a message can also be displayed at any location in the associated PolySpace Log file. An error message will generally cause the verification to stop.

This section describes common licensing errors. For other errors, please refer to the *FLEXnet Licensing End User Guide* available at [www.macrovision.com](http://www.macrovision.com).

### Error -15, the FLEXnet server is unreachable

```

Checking license ...
Unable to checkout feature PolySpace_Client_C_CPP for version 17:
Cannot connect to license server system.
  The license server manager (lmgrd) has not been started yet,
  the wrong port@host or license file is being used, or the
  port or hostname in the license file has been changed.
Feature:      PolySpace_Client_C_CPP
Server name:  fitou
License path: /usr/local/attol/atu/v33a/sun4/sun0S5/bin/license.txt:
              /usr/local.rhone/pst/tmp/nnu.lic:/usr/local.rhone/pst/*.lic
FLEXnet Licensing error:-15,570. System Error: 115 "Operation
now in progress"
For further information, refer to the FLEXnet Licensing
End User Guide, available at "www.macrovision.com".
*** License error

```

\*\*\* Aborting.

## **Error -5, the PolySpace feature is not available**

Checking license ...

Unable to checkout feature PolySpace\_Client\_C\_CPP for version 17:

No such feature exists.

Feature: PolySpace\_Client\_C\_CPP

License path: /usr/local/attol/atu/v33a/sun4/sunOS5/bin/license.txt:  
/usr/local.rhone/pst/tmp/nnu.lic:/usr/local.rhone/pst/\*.lic

FLEXnet Licensing error:-5,357

For further information, refer to the FLEXnet Licensing

End User Guide, available at "www.macrovision.com".

\*\*\* License error

\*\*\* Aborting.

## **Error -21, the maintenance date has expired**

Checking license ...

Unable to checkout feature PolySpace\_Client\_C\_CPP for version 17:

License file does not support this version.

Feature: PolySpace\_Client\_C\_CPP

Application version > License version: 17 > 16

License path: /usr/local/attol/atu/v33a/sun4/sunOS5/bin/license.txt:  
/usr/local.rhone/pst/tmp/nnu.lic:/usr/local.rhone/pst/\*.lic

FLEXnet Licensing error:-21,126

For further information, refer to the FLEXnet Licensing

End User Guide, available at "www.macrovision.com".

\*\*\* License error

\*\*\* Aborting.

## **Error -10, the license date has expired**

Checking license ...

Unable to checkout feature PolySpace\_Client\_C\_CPP for version 17:

Feature has expired.

Feature: PolySpace\_Client\_C\_CPP

Expire date: 31-jan-2007

License path: /usr/local/attol/atu/v33a/sun4/sunOS5/bin/license.txt:  
/usr/local.rhone/pst/tmp/nnu.lic:/usr/local.rhone/pst/\*.lic

FLEXnet Licensing error:-10,32

For further information, refer to the FLEXnet Licensing  
End User Guide, available at "[www.macrovision.com](http://www.macrovision.com)".  
\*\*\* License error  
\*\*\* Aborting.



## A

- activating
  - polyspace software 2-14
- architecture
  - license 9-2

## C

- checking PolySpace usage 9-29
- Client
  - description 1-10
  - installing 2-4
  - overview 2-2
- client software
  - configuring 2-28
- client/server
  - architecture 1-10
- concurrent license 9-4 9-17 9-26
  - configuring 9-24
- Config Services 9-19
- configuration
  - troubleshooting 2-36
- Configuration using Services 9-19
- configuring
  - client software 2-10 2-28
  - concurrent license 9-24
  - FLEXnet server 9-18 9-23
  - manually 2-28
  - server software 2-30
- CPU 1-10
  - installing new 2-36

## D

- DC license 9-2
- designated computer license 9-2
- documentation
  - folders 9-18 9-23
  - requirements 1-6
- DVD

contents 1-7

## E

- Eclipse
  - installing plug-in 7-2
- Error -10 9-31
- Error -15 9-30
- Error -21 9-31
- Error -5 9-31
- error messages 9-30
- errors
  - troubleshooting 2-36

## F

- FLEXnet
  - overview 9-12
  - software components 9-13
- FLEXnet 10.8 9-16
- FLEXnet server 9-4
  - configuring 9-18 9-23
  - installing 9-17 9-22
  - installing on existing 9-28
- floating license 9-4
- folders
  - documentation 9-18 9-23
  - installation 1-12 9-18 9-22 to 9-23
  - LINUX 9-16 9-23
  - required 1-12
  - UNIX 9-16 9-23
  - windows 9-18
  - Windows 9-14
- format
  - license 9-11 9-26

## H

- hardware
  - requirements 1-2
- hostid 9-5 to 9-6 9-11 9-27

**I**

## icons

- after installation 2-25

- individual license 9-2

## installation

- architecture 1-10

- folders 1-12

- options 1-10

- starting 1-8 2-4 2-26

- installation folders 9-18 9-22

## installing

- DC license file 9-10

- FLEXnet server 9-17 9-22

- licenses on existing FLEXnet server 9-28

- PolySpace Model Link SL 3-2

- PolySpace Model Link TL 3-2

- PolySpace UML link RH 4-2

**L**

## license

- architecture 9-2

- concurrent 9-24

- format 9-11 9-26

- options 1-5

- license file 9-10 9-29

- location 9-10

- obtaining 9-5

- license.dat 9-10 9-14 9-18 9-23

- license.lic 9-20

## licensing

- client software 2-10

- polyspace software 2-14

## Linux

- requirements 1-6

- lmgrd 9-14 9-16 9-20 9-28

- lmhostid 9-6 to 9-7

- lmtools.exe 9-6 9-14 9-18

- lmutil 9-6 9-14 9-16

- location

- documentation 9-18 9-23

- license file 9-10

- LINUX software 9-16

- software 9-18 9-22

- UNIX software 9-16

- Windows software 9-14

**M**

- machine\_hostid 9-6

## MATLAB

- reinstalling PolySpace after upgrade 3-4

- MLM 9-14 9-16 9-27

## model link

- installing 3-2

**O**

## obtaining

- license file 9-5

**P**

## path

- to debug log file 9-20

- to license file 9-20

- to lmgrd.exe file 9-20

- performing status enquiry 9-22

## PolySpace

- architecture 1-10

- PolySpace C++ add-in for Visual Studio 6-2

## PolySpace Client

- description 1-10

- installing 2-4

- overview 2-2

- PolySpace Client for Ada 9-27

- PolySpace Client for C/C++ 9-27

## PolySpace Client software

- configuring 2-28

- PolySpace Model Link SL 3-1 9-27

- troubleshooting 3-5

- PolySpace Model Link TL 3-1 9-27
- PolySpace plug-in for Eclipse IDE 7-2
- PolySpace Server
  - description 1-10
  - overview 2-3
- PolySpace Server for Ada 9-27
- PolySpace Server for C/C++ 9-27
- PolySpace Server software
  - configuring 2-30
- PolySpace UML Link RH 4-1 9-27
- polyspace-ada-check-license 9-29
- polyspace-ada95-check-license 9-29
- polyspace-c-check-license 9-29
- PolySpace\_Client\_Ada 9-27
- PolySpace\_Client\_C\_CPP 9-27
- polyspace-cpp-check-license 9-29
- PolySpace\_Feature 9-27
- PolySpace\_Model\_Link\_SL 9-27
- PolySpace\_Model\_Link\_TL 9-27
- PolySpace\_Server\_Ada 9-27
- PolySpace\_Server\_C\_CPP 9-27
- PolySpace\_UML\_Link\_RH 9-27
- PolySpaceInstallCommon 9-10

## R

- requirements
  - access rights 2-4
  - hardware 1-2
  - license 1-5
  - PolySpace plug-ins 1-3
  - PolySpace products 1-2
  - software 1-2
  - UNIX/Linux 1-6

## S

- Server
  - description 1-10
  - overview 2-3

- server configuration
  - graphical 2-30
  - manual 2-32
  - troubleshooting 2-36
- server software
  - configuring 2-30
- Server Status 9-21
- server\_hostid 9-27
- service name 9-18 9-20 9-23
- setting up
  - FLEXnet server 9-18 9-23
- silent mode
  - installing 2-26
- Simulink
  - installing PolySpace Model Link SL 3-2
- software
  - requirements 1-2
- software components
  - FLEXnet 9-13
  - Linux 9-16
  - Solaris 9-16
  - Windows 9-14
- Start/Stop/Reread 9-21
- supported versions 9-16

## T

- terminology 1-10
- troubleshooting 9-30
  - PolySpace Model Link SL installation 3-5
  - server configuration 2-36

## U

- UML link
  - installing 4-2
- uninstalling
  - on UNIX 8-4
  - on Windows 8-2
- UNIX

- installing on 2-26
- requirements 1-6
- upgrading
  - PolySpace software 5-1
- usage
  - checking 9-29

## **V**

- versions
  - supported 9-16

- Visual Studio
  - installing add-in 6-2
  - vsn 9-7

## **W**

- Windows service
  - configuring license manager 9-18
- wizard
  - starting 1-8 2-4 2-26